



**STATE OF WASHINGTON**  
**DEPARTMENT OF LICENSING**  
*PO Box 9020 • Olympia, Washington 98507-9020*

August 18, 2023

### Washington State Drivers Report for May 2023

The monthly report provides a summary of Washington drivers' license (WDL) in-migration activity. There was a major driver licensing system change effective September 2018 and the following improvements were made to this report:

- Reporting covers the true calendar month from September 2018 forward. Previously, the month reported was the sum of the weeks through the last Saturday of the month.
- Data cleaning/reclassification may have some impact to the report counts. Caution is advised when comparing the new and old reports.

During the month of May, 13,084 out-of-state drivers obtained a Washington driver license. This is 339 fewer than the 13,423 out-of-state drivers who obtained licenses in May of 2022. For the 12 months ending May 2023, 174,390 out-of-state drivers obtained a Washington driver license, a decrease over the same period a year ago by -5.1 percent.

The table below depicts WDL migration into Washington State featuring states that have historically been the top five in-migration states. Also depicted in the table below is a 12-month moving sum to provide an annual trend.

|                         | May 2023      |               |             | Year Ending May 2023 |                |             |
|-------------------------|---------------|---------------|-------------|----------------------|----------------|-------------|
|                         | 2023          | 2022          | % Change    | 2023                 | 2022           | % Change    |
| <b>Total Drivers In</b> | <b>13,084</b> | <b>13,423</b> | <b>-2.5</b> | <b>174,390</b>       | <b>183,784</b> | <b>-5.1</b> |
| <b>Weekly Average</b>   | <b>3,271</b>  | <b>3,356</b>  | <b>-2.5</b> | <b>3,354</b>         | <b>3,534</b>   | <b>-5.1</b> |
| <b>California</b>       | 2,336         | 2,799         | -16.5       | 33,245               | 40,504         | -17.9       |
| <b>Oregon</b>           | 1,406         | 1,433         | -1.9        | 17,904               | 20,370         | -12.1       |
| <b>Texas</b>            | 834           | 769           | 8.5         | 10,624               | 10,792         | -1.6        |
| <b>Arizona</b>          | 577           | 560           | 3.0         | 7,091                | 7,636          | -7.1        |
| <b>Idaho</b>            | 446           | 440           | 1.4         | 5,712                | 6,210          | -8.0        |

The graphs on page 2 show the 12-month moving sum of drivers moving into Washington, the percent change from a year ago, and the top five in-migration states.

The table on page 3 has the current month driver in-migration by state along with the same month a year ago showing the year-over-year (YOY) change as well as the percent change by state. The monthly detail report of driver migration totals by location moved from and by county moved to begins on page 4.

The WDL Reports are available online at <https://www.dol.wa.gov/about/driversreports.html>.



**Alice Vogel** | she, her, hers  
**Tax Policy Specialist**  
 Department of Licensing | [dol.wa.gov](https://www.dol.wa.gov)

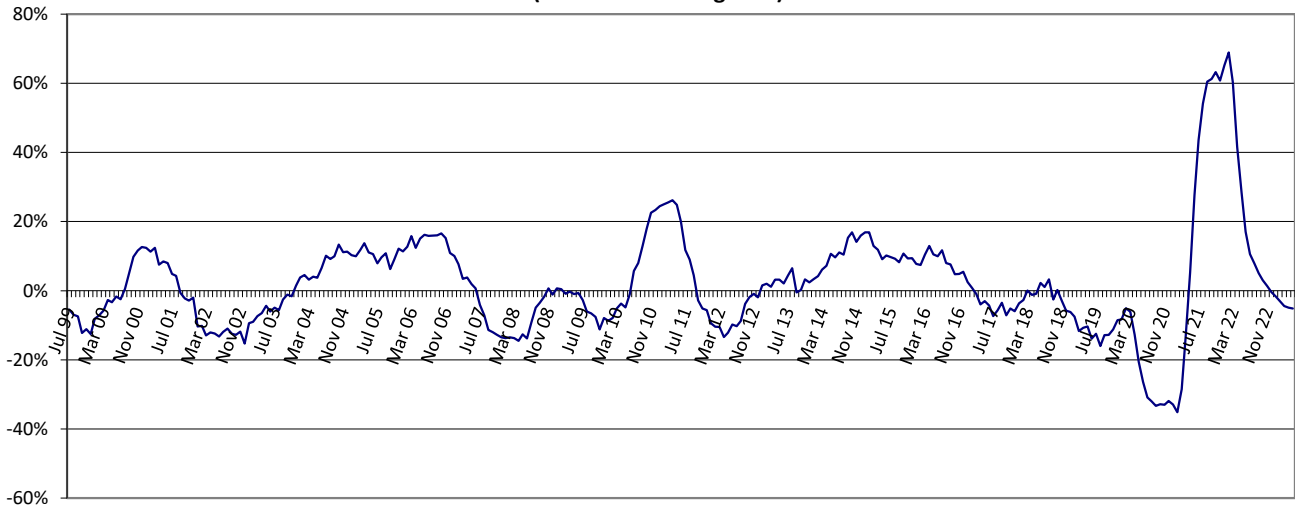
Helping every Washington resident live, work, drive, & thrive.

We are committed to providing equal access to our services.  
 For more information, visit [dol.wa.gov/access](https://www.dol.wa.gov/access). (TDD/TTY call 711).

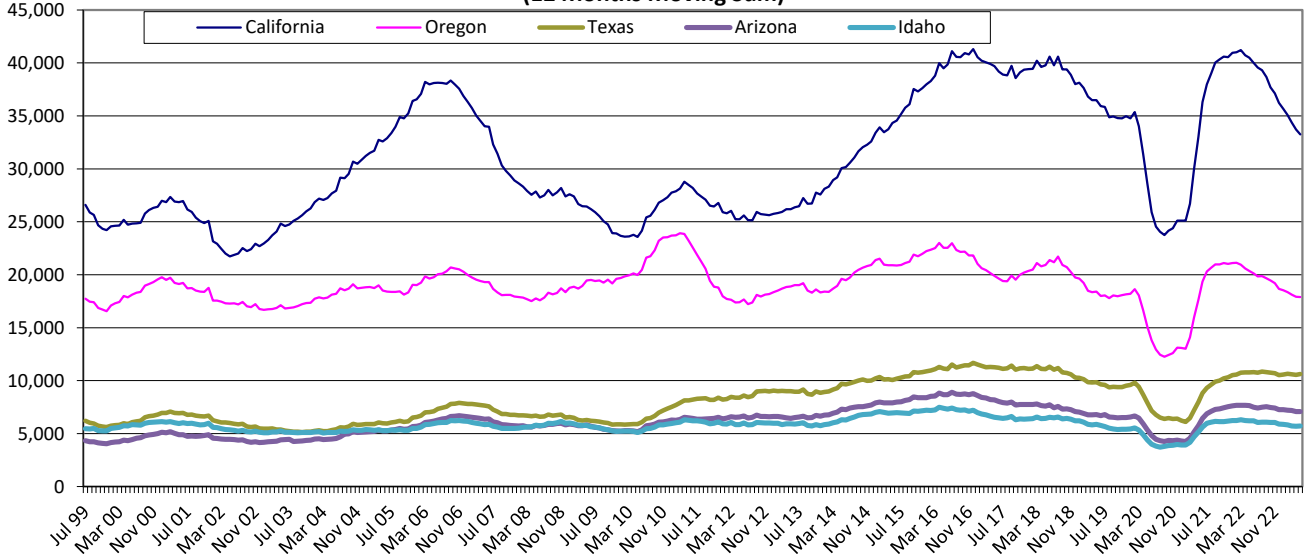
**Washington State Driver's Licenses  
(12 Month Moving Sum)**



**% Change Year Ago  
(12 Month Moving Sum)**



**Top Five In-Migration States  
(12 Months Moving Sum)**



## Driver In-Migration By State

Month:      May

| Number of Weeks | 4             | 4             |              |              |
|-----------------|---------------|---------------|--------------|--------------|
| State           | 2023          | 2022          | YOY Change   | % Change     |
| ALABAMA         | 70            | 51            | 19           | 37.3%        |
| ALASKA          | 161           | 185           | (24)         | -13.0%       |
| ARIZONA         | 577           | 560           | 17           | 3.0%         |
| ARKANSAS        | 47            | 41            | 6            | 14.6%        |
| CALIFORNIA      | 2,336         | 2,799         | (463)        | -16.5%       |
| COLORADO        | 418           | 422           | (4)          | -0.9%        |
| CONNECTICUT     | 42            | 61            | (19)         | -31.1%       |
| DELAWARE        | 10            | 15            | (5)          | -33.3%       |
| FLORIDA         | 667           | 519           | 148          | 28.5%        |
| GEORGIA         | 193           | 205           | (12)         | -5.9%        |
| HAWAII          | 171           | 199           | (28)         | -14.1%       |
| IDAHO           | 446           | 440           | 6            | 1.4%         |
| ILLINOIS        | 212           | 281           | (69)         | -24.6%       |
| INDIANA         | 94            | 99            | (5)          | -5.1%        |
| IOWA            | 66            | 74            | (8)          | -10.8%       |
| KANSAS          | 82            | 95            | (13)         | -13.7%       |
| KENTUCKY        | 55            | 48            | 7            | 14.6%        |
| LOUISIANA       | 74            | 70            | 4            | 5.7%         |
| MAINE           | 24            | 21            | 3            | 14.3%        |
| MARYLAND        | 118           | 121           | (3)          | -2.5%        |
| MASSACHUSETTS   | 104           | 141           | (37)         | -26.2%       |
| MICHIGAN        | 178           | 180           | (2)          | -1.1%        |
| MINNESOTA       | 150           | 156           | (6)          | -3.8%        |
| MISSISSIPPI     | 23            | 37            | (14)         | -37.8%       |
| MISSOURI        | 137           | 119           | 18           | 15.1%        |
| MONTANA         | 163           | 168           | (5)          | -3.0%        |
| NEBRASKA        | 56            | 67            | (11)         | -16.4%       |
| NEVADA          | 262           | 279           | (17)         | -6.1%        |
| NEW HAMPSHIRE   | 25            | 27            | (2)          | -7.4%        |
| NEW JERSEY      | 125           | 127           | (2)          | -1.6%        |
| NEW MEXICO      | 85            | 82            | 3            | 3.7%         |
| NEW YORK        | 251           | 222           | 29           | 13.1%        |
| NORTH CAROLINA  | 207           | 210           | (3)          | -1.4%        |
| NORTH DAKOTA    | 38            | 38            | 0            | 0.0%         |
| OHIO            | 143           | 178           | (35)         | -19.7%       |
| OKLAHOMA        | 79            | 79            | 0            | 0.0%         |
| OREGON          | 1,406         | 1,433         | (27)         | -1.9%        |
| PENNSYLVANIA    | 151           | 196           | (45)         | -23.0%       |
| RHODE ISLAND    | 14            | 15            | (1)          | -6.7%        |
| SOUTH CAROLINA  | 76            | 79            | (3)          | -3.8%        |
| SOUTH DAKOTA    | 40            | 35            | 5            | 14.3%        |
| TENNESSEE       | 122           | 132           | (10)         | -7.6%        |
| TEXAS           | 834           | 769           | 65           | 8.5%         |
| UTAH            | 200           | 244           | (44)         | -18.0%       |
| VERMONT         | 16            | 22            | (6)          | -27.3%       |
| VIRGINIA        | 187           | 232           | (45)         | -19.4%       |
| WASHINGTON      | 0             | 0             | 0            | 0.0%         |
| WEST VIRGINIA   | 14            | 11            | 3            | 27.3%        |
| WISCONSIN       | 114           | 136           | (22)         | -16.2%       |
| WYOMING         | 33            | 36            | (3)          | -8.3%        |
| WASH. DC        | 29            | 36            | (7)          | -19.4%       |
| OUTSIDE U.S.    | 1,959         | 1,631         | 328          | 20.1%        |
| <b>TOTAL</b>    | <b>13,084</b> | <b>13,423</b> | <b>(339)</b> | <b>-2.5%</b> |

## May 2023 Totals by Location Moved From, and By County Moved To

| FROM / TO            | TOTAL | GRAYS |        |        |        |         |       |          |         |         |       |          |          |       |        |        |           |      |        |          |          |
|----------------------|-------|-------|--------|--------|--------|---------|-------|----------|---------|---------|-------|----------|----------|-------|--------|--------|-----------|------|--------|----------|----------|
|                      |       | ADAMS | ASOTIN | BENTON | CHELAN | CLALLAM | CLARK | COLUMBIA | COWLITZ | DOUGLAS | FERRY | FRANKLIN | GARFIELD | GRANT | HARBOR | ISLAND | JEFFERSON | KING | KITSAP | KITTITAS | KLCKITAT |
| ALABAMA              | 70    | 0     | 0      | 0      | 2      | 1       | 3     | 0        | 3       | 0       | 0     | 0        | 0        | 1     | 2      | 0      | 27        | 2    | 0      | 0        |          |
| ALASKA               | 161   | 0     | 2      | 1      | 0      | 7       | 7     | 0        | 1       | 1       | 0     | 0        | 0        | 0     | 4      | 0      | 43        | 6    | 0      | 0        |          |
| ARIZONA              | 577   | 1     | 2      | 19     | 6      | 10      | 44    | 0        | 6       | 1       | 0     | 5        | 0        | 7     | 4      | 13     | 4         | 136  | 37     | 4        | 0        |
| ARKANSAS             | 47    | 0     | 2      | 1      | 1      | 1       | 2     | 0        | 1       | 0       | 0     | 0        | 0        | 0     | 0      | 0      | 9         | 4    | 1      | 0        |          |
| CALIFORNIA           | 2336  | 1     | 5      | 34     | 6      | 25      | 198   | 0        | 31      | 4       | 0     | 22       | 0        | 12    | 21     | 40     | 8         | 921  | 72     | 5        | 9        |
| COLORADO             | 418   | 1     | 0      | 5      | 4      | 10      | 22    | 0        | 3       | 1       | 0     | 4        | 0        | 1     | 1      | 4      | 3         | 126  | 32     | 0        | 0        |
| CONNECTICUT          | 42    | 0     | 0      | 0      | 0      | 1       | 0     | 0        | 0       | 0       | 0     | 0        | 0        | 0     | 0      | 0      | 0         | 23   | 4      | 0        | 0        |
| DELAWARE             | 10    | 0     | 0      | 0      | 0      | 1       | 0     | 0        | 0       | 0       | 0     | 0        | 0        | 0     | 1      | 0      | 0         | 4    | 2      | 0        | 0        |
| FLORIDA              | 667   | 0     | 1      | 13     | 4      | 7       | 40    | 0        | 0       | 2       | 1     | 1        | 0        | 6     | 3      | 30     | 2         | 255  | 31     | 0        | 2        |
| GEORGIA              | 193   | 0     | 0      | 6      | 1      | 1       | 4     | 0        | 1       | 1       | 0     | 1        | 0        | 0     | 3      | 4      | 0         | 87   | 9      | 0        | 0        |
| HAWAII               | 171   | 0     | 0      | 3      | 3      | 4       | 9     | 0        | 1       | 0       | 0     | 1        | 0        | 1     | 0      | 3      | 1         | 55   | 8      | 0        | 0        |
| IDAHO                | 446   | 0     | 31     | 18     | 5      | 4       | 14    | 0        | 6       | 1       | 2     | 3        | 0        | 12    | 3      | 6      | 0         | 47   | 9      | 0        | 0        |
| ILLINOIS             | 212   | 0     | 0      | 3      | 1      | 2       | 5     | 0        | 1       | 0       | 0     | 1        | 0        | 0     | 0      | 5      | 2         | 104  | 11     | 0        | 0        |
| INDIANA              | 94    | 0     | 0      | 2      | 0      | 0       | 7     | 0        | 0       | 0       | 1     | 1        | 0        | 1     | 0      | 1      | 1         | 30   | 6      | 0        | 0        |
| IOWA                 | 66    | 0     | 0      | 1      | 1      | 0       | 2     | 0        | 0       | 0       | 0     | 0        | 0        | 0     | 1      | 0      | 0         | 21   | 4      | 0        | 0        |
| KANSAS               | 82    | 0     | 0      | 1      | 1      | 0       | 4     | 0        | 0       | 0       | 0     | 0        | 0        | 0     | 0      | 4      | 0         | 29   | 0      | 1        | 0        |
| KENTUCKY             | 55    | 0     | 1      | 1      | 0      | 0       | 5     | 0        | 1       | 0       | 0     | 2        | 0        | 1     | 0      | 1      | 0         | 10   | 1      | 0        | 0        |
| LOUISIANA            | 74    | 0     | 0      | 4      | 0      | 0       | 2     | 0        | 0       | 0       | 0     | 0        | 0        | 1     | 0      | 2      | 0         | 25   | 2      | 0        | 0        |
| MAINE                | 24    | 0     | 0      | 0      | 0      | 1       | 2     | 0        | 0       | 0       | 0     | 0        | 0        | 0     | 0      | 1      | 0         | 4    | 3      | 0        | 0        |
| MARYLAND             | 118   | 0     | 0      | 5      | 0      | 0       | 10    | 0        | 0       | 0       | 0     | 1        | 0        | 0     | 0      | 5      | 0         | 48   | 6      | 0        | 0        |
| MASSACHUSETTS        | 104   | 0     | 0      | 0      | 0      | 0       | 5     | 0        | 0       | 0       | 0     | 0        | 0        | 0     | 0      | 0      | 0         | 65   | 6      | 0        | 0        |
| MICHIGAN             | 178   | 0     | 0      | 3      | 0      | 1       | 11    | 0        | 3       | 0       | 0     | 0        | 0        | 0     | 0      | 3      | 2         | 93   | 6      | 0        | 0        |
| MINNESOTA            | 150   | 0     | 0      | 1      | 0      | 1       | 6     | 0        | 3       | 0       | 0     | 1        | 0        | 0     | 0      | 0      | 0         | 61   | 2      | 1        | 0        |
| MISSISSIPPI          | 23    | 0     | 0      | 1      | 0      | 0       | 2     | 0        | 1       | 0       | 0     | 0        | 0        | 0     | 0      | 1      | 0         | 5    | 2      | 0        | 0        |
| MISSOURI             | 137   | 0     | 0      | 3      | 0      | 2       | 9     | 0        | 2       | 0       | 0     | 0        | 0        | 1     | 1      | 2      | 0         | 47   | 2      | 0        | 0        |
| MONTANA              | 163   | 0     | 1      | 5      | 3      | 4       | 12    | 0        | 1       | 0       | 0     | 1        | 0        | 1     | 2      | 0      | 0         | 29   | 9      | 1        | 0        |
| NEBRASKA             | 56    | 0     | 0      | 1      | 2      | 1       | 3     | 0        | 2       | 0       | 0     | 0        | 0        | 1     | 0      | 1      | 1         | 15   | 3      | 0        | 1        |
| NEVADA               | 262   | 1     | 0      | 5      | 5      | 3       | 17    | 0        | 2       | 1       | 0     | 6        | 0        | 4     | 7      | 2      | 0         | 66   | 9      | 7        | 3        |
| NEW HAMPSHIRE        | 25    | 0     | 0      | 0      | 0      | 1       | 0     | 0        | 0       | 0       | 0     | 0        | 0        | 0     | 0      | 2      | 1         | 13   | 0      | 0        | 0        |
| NEW JERSEY           | 125   | 0     | 0      | 1      | 0      | 1       | 1     | 0        | 0       | 0       | 0     | 0        | 0        | 0     | 0      | 5      | 0         | 77   | 7      | 0        | 0        |
| NEW MEXICO           | 85    | 0     | 0      | 4      | 2      | 1       | 4     | 0        | 0       | 0       | 0     | 2        | 0        | 0     | 1      | 1      | 1         | 26   | 5      | 0        | 0        |
| NEW YORK             | 251   | 0     | 0      | 3      | 1      | 2       | 8     | 0        | 1       | 0       | 0     | 0        | 0        | 1     | 0      | 2      | 1         | 123  | 12     | 0        | 0        |
| NORTH CAROLINA       | 207   | 0     | 0      | 5      | 0      | 1       | 11    | 0        | 0       | 1       | 0     | 0        | 0        | 0     | 2      | 3      | 2         | 66   | 13     | 0        | 2        |
| NORTH DAKOTA         | 38    | 0     | 0      | 0      | 0      | 1       | 5     | 0        | 0       | 0       | 1     | 1        | 0        | 2     | 0      | 0      | 0         | 6    | 0      | 0        | 0        |
| OHIO                 | 143   | 0     | 0      | 5      | 3      | 0       | 4     | 0        | 1       | 0       | 0     | 1        | 0        | 3     | 1      | 2      | 0         | 66   | 9      | 0        | 0        |
| OKLAHOMA             | 79    | 0     | 0      | 2      | 0      | 2       | 4     | 0        | 2       | 0       | 0     | 0        | 0        | 2     | 2      | 0      | 0         | 22   | 7      | 0        | 0        |
| OREGON               | 1406  | 0     | 3      | 41     | 9      | 12      | 558   | 0        | 70      | 7       | 2     | 8        | 2        | 10    | 17     | 8      | 8         | 200  | 21     | 6        | 40       |
| PENNSYLVANIA         | 151   | 0     | 0      | 4      | 0      | 1       | 8     | 0        | 1       | 0       | 0     | 0        | 0        | 0     | 0      | 1      | 0         | 76   | 5      | 1        | 0        |
| RHODE ISLAND         | 14    | 0     | 0      | 1      | 0      | 0       | 1     | 0        | 0       | 0       | 0     | 0        | 0        | 0     | 2      | 0      | 0         | 5    | 0      | 0        | 0        |
| SOUTH CAROLINA       | 76    | 0     | 0      | 4      | 0      | 0       | 3     | 0        | 2       | 0       | 0     | 0        | 0        | 0     | 0      | 1      | 0         | 20   | 6      | 0        | 0        |
| SOUTH DAKOTA         | 40    | 0     | 1      | 2      | 0      | 0       | 2     | 0        | 0       | 0       | 0     | 1        | 0        | 0     | 1      | 0      | 1         | 8    | 1      | 0        | 1        |
| TENNESSEE            | 122   | 0     | 0      | 2      | 0      | 0       | 8     | 0        | 2       | 0       | 0     | 0        | 0        | 1     | 0      | 5      | 0         | 32   | 3      | 3        | 0        |
| TEXAS                | 834   | 1     | 0      | 11     | 4      | 6       | 52    | 0        | 5       | 3       | 0     | 7        | 0        | 6     | 4      | 7      | 1         | 331  | 34     | 1        | 1        |
| UTAH                 | 200   | 0     | 0      | 10     | 0      | 4       | 21    | 0        | 2       | 1       | 0     | 4        | 0        | 2     | 4      | 0      | 3         | 49   | 13     | 1        | 2        |
| VERMONT              | 16    | 0     | 0      | 0      | 0      | 0       | 0     | 0        | 0       | 1       | 0     | 0        | 0        | 0     | 0      | 1      | 2         | 5    | 1      | 0        | 0        |
| VIRGINIA             | 187   | 0     | 0      | 4      | 0      | 0       | 6     | 1        | 0       | 0       | 0     | 0        | 0        | 3     | 1      | 11     | 0         | 67   | 10     | 0        | 1        |
| WASHINGTON           | 0     | 0     | 0      | 0      | 0      | 0       | 0     | 0        | 0       | 0       | 0     | 0        | 0        | 0     | 0      | 0      | 0         | 0    | 0      | 0        | 0        |
| WEST VIRGINIA        | 14    | 0     | 0      | 0      | 0      | 0       | 1     | 0        | 0       | 0       | 0     | 0        | 0        | 0     | 1      | 0      | 0         | 7    | 0      | 0        | 0        |
| WISCONSIN            | 114   | 0     | 0      | 1      | 0      | 3       | 11    | 0        | 0       | 0       | 0     | 0        | 0        | 0     | 0      | 0      | 0         | 50   | 3      | 1        | 0        |
| WYOMING              | 33    | 0     | 0      | 0      | 0      | 0       | 3     | 0        | 3       | 1       | 0     | 0        | 0        | 1     | 0      | 1      | 0         | 9    | 0      | 0        | 2        |
| DISTRICT OF COLUMBIA | 29    | 0     | 0      | 1      | 0      | 0       | 0     | 0        | 0       | 0       | 0     | 0        | 0        | 0     | 0      | 0      | 0         | 22   | 0      | 0        | 0        |
| AFGHANISTAN          | 2     | 0     | 0      | 0      | 0      | 0       | 0     | 0        | 0       | 0       | 0     | 0        | 0        | 0     | 0      | 0      | 0         | 2    | 0      | 0        | 0        |
| ÅLAND ISLANDS        | 0     | 0     | 0      | 0      | 0      | 0       | 0     | 0        | 0       | 0       | 0     | 0        | 0        | 0     | 0      | 0      | 0         | 0    | 0      | 0        | 0        |
| ALBANIA              | 0     | 0     | 0      | 0      | 0      | 0       | 0     | 0        | 0       | 0       | 0     | 0        | 0        | 0     | 0      | 0      | 0         | 0    | 0      | 0        | 0        |
| ALGERIA              | 0     | 0     | 0      | 0      | 0      | 0       | 0     | 0        | 0       | 0       | 0     | 0        | 0        | 0     | 0      | 0      | 0         | 0    | 0      | 0        | 0        |
| AMERICAN SAMOA       | 22    | 0     | 0      | 0      | 0      | 0       | 0     | 0        | 0       | 0       | 0     | 0        | 0        | 0     | 0      | 0      | 0         | 8    | 0      | 0        | 0        |

### May 2023 Totals by Location Moved From, and By County Moved To

| FROM / TO                | TOTAL | GRAYS |        |        |        |         |       |          |         |         |       |          |          |       |        |        |           |      |        |          |          |
|--------------------------|-------|-------|--------|--------|--------|---------|-------|----------|---------|---------|-------|----------|----------|-------|--------|--------|-----------|------|--------|----------|----------|
|                          |       | ADAMS | ASOTIN | BENTON | CHELAN | CLALLAM | CLARK | COLUMBIA | COWLITZ | DOUGLAS | FERRY | FRANKLIN | GARFIELD | GRANT | HARBOR | ISLAND | JEFFERSON | KING | KITSAP | KITTITAS | KLCKITAT |
| ANDORRA                  | 0     | 0     | 0      | 0      | 0      | 0       | 0     | 0        | 0       | 0       | 0     | 0        | 0        | 0     | 0      | 0      | 0         | 0    | 0      | 0        |          |
| ANGOLA                   | 12    | 0     | 0      | 0      | 0      | 0       | 0     | 0        | 0       | 0       | 0     | 0        | 0        | 0     | 0      | 0      | 0         | 7    | 0      | 0        | 0        |
| ANGUILLA                 | 0     | 0     | 0      | 0      | 0      | 0       | 0     | 0        | 0       | 0       | 0     | 0        | 0        | 0     | 0      | 0      | 0         | 0    | 0      | 0        | 0        |
| ANTARCTICA               | 0     | 0     | 0      | 0      | 0      | 0       | 0     | 0        | 0       | 0       | 0     | 0        | 0        | 0     | 0      | 0      | 0         | 0    | 0      | 0        | 0        |
| ANTIGUA-BARBUDA          | 0     | 0     | 0      | 0      | 0      | 0       | 0     | 0        | 0       | 0       | 0     | 0        | 0        | 0     | 0      | 0      | 0         | 0    | 0      | 0        | 0        |
| ARGENTINA                | 3     | 0     | 0      | 0      | 0      | 0       | 0     | 0        | 0       | 0       | 0     | 0        | 0        | 0     | 0      | 0      | 0         | 2    | 0      | 0        | 0        |
| ARMENIA                  | 2     | 0     | 0      | 0      | 0      | 0       | 0     | 0        | 0       | 0       | 0     | 0        | 0        | 0     | 0      | 0      | 0         | 2    | 0      | 0        | 0        |
| ARUBA                    | 0     | 0     | 0      | 0      | 0      | 0       | 0     | 0        | 0       | 0       | 0     | 0        | 0        | 0     | 0      | 0      | 0         | 0    | 0      | 0        | 0        |
| AUSTRALIA                | 2     | 0     | 0      | 0      | 0      | 0       | 0     | 0        | 0       | 0       | 0     | 0        | 0        | 0     | 0      | 0      | 0         | 1    | 0      | 0        | 0        |
| AUSTRIA                  | 0     | 0     | 0      | 0      | 0      | 0       | 0     | 0        | 0       | 0       | 0     | 0        | 0        | 0     | 0      | 0      | 0         | 0    | 0      | 0        | 0        |
| AZERBAIJAN               | 2     | 0     | 0      | 0      | 0      | 0       | 0     | 0        | 0       | 0       | 0     | 0        | 0        | 0     | 0      | 0      | 0         | 2    | 0      | 0        | 0        |
| BAHAMAS                  | 1     | 0     | 0      | 0      | 0      | 0       | 0     | 0        | 0       | 0       | 0     | 0        | 0        | 1     | 0      | 0      | 0         | 0    | 0      | 0        | 0        |
| BAHRAIN                  | 0     | 0     | 0      | 0      | 0      | 0       | 0     | 0        | 0       | 0       | 0     | 0        | 0        | 0     | 0      | 0      | 0         | 0    | 0      | 0        | 0        |
| BANGLADESH               | 1     | 0     | 0      | 0      | 0      | 0       | 0     | 0        | 0       | 0       | 0     | 0        | 0        | 0     | 0      | 0      | 0         | 1    | 0      | 0        | 0        |
| BARBADOS                 | 0     | 0     | 0      | 0      | 0      | 0       | 0     | 0        | 0       | 0       | 0     | 0        | 0        | 0     | 0      | 0      | 0         | 0    | 0      | 0        | 0        |
| BELARUS                  | 17    | 0     | 0      | 0      | 0      | 0       | 0     | 0        | 0       | 0       | 0     | 0        | 0        | 0     | 0      | 0      | 0         | 9    | 0      | 0        | 0        |
| BELGIUM                  | 0     | 0     | 0      | 0      | 0      | 0       | 0     | 0        | 0       | 0       | 0     | 0        | 0        | 0     | 0      | 0      | 0         | 0    | 0      | 0        | 0        |
| BELIZE                   | 1     | 0     | 0      | 0      | 0      | 0       | 0     | 0        | 0       | 0       | 0     | 0        | 0        | 0     | 0      | 0      | 0         | 1    | 0      | 0        | 0        |
| BENIN                    | 0     | 0     | 0      | 0      | 0      | 0       | 0     | 0        | 0       | 0       | 0     | 0        | 0        | 0     | 0      | 0      | 0         | 0    | 0      | 0        | 0        |
| BERMUDA                  | 0     | 0     | 0      | 0      | 0      | 0       | 0     | 0        | 0       | 0       | 0     | 0        | 0        | 0     | 0      | 0      | 0         | 0    | 0      | 0        | 0        |
| BHUTAN                   | 0     | 0     | 0      | 0      | 0      | 0       | 0     | 0        | 0       | 0       | 0     | 0        | 0        | 0     | 0      | 0      | 0         | 0    | 0      | 0        | 0        |
| BOLIVIA                  | 1     | 0     | 0      | 0      | 0      | 0       | 0     | 0        | 0       | 0       | 0     | 0        | 0        | 0     | 0      | 0      | 0         | 1    | 0      | 0        | 0        |
| BONAIRE, SINT EUSTATIUS  | 0     | 0     | 0      | 0      | 0      | 0       | 0     | 0        | 0       | 0       | 0     | 0        | 0        | 0     | 0      | 0      | 0         | 0    | 0      | 0        | 0        |
| BOSNIA AND HERZEGOVINA   | 1     | 0     | 0      | 0      | 0      | 0       | 0     | 0        | 0       | 0       | 0     | 0        | 0        | 0     | 0      | 0      | 0         | 1    | 0      | 0        | 0        |
| BOTSWANA                 | 1     | 0     | 0      | 0      | 0      | 0       | 0     | 0        | 0       | 0       | 0     | 0        | 0        | 0     | 0      | 0      | 0         | 1    | 0      | 0        | 0        |
| BOUVET ISLAND            | 0     | 0     | 0      | 0      | 0      | 0       | 0     | 0        | 0       | 0       | 0     | 0        | 0        | 0     | 0      | 0      | 0         | 0    | 0      | 0        | 0        |
| BRAZIL                   | 29    | 0     | 0      | 1      | 1      | 0       | 1     | 0        | 0       | 0       | 0     | 0        | 0        | 0     | 0      | 0      | 0         | 17   | 0      | 0        | 0        |
| BRITISH INDIAN OCEAN TEF | 0     | 0     | 0      | 0      | 0      | 0       | 0     | 0        | 0       | 0       | 0     | 0        | 0        | 0     | 0      | 0      | 0         | 0    | 0      | 0        | 0        |
| BRUNEI DARUSSALAM        | 0     | 0     | 0      | 0      | 0      | 0       | 0     | 0        | 0       | 0       | 0     | 0        | 0        | 0     | 0      | 0      | 0         | 0    | 0      | 0        | 0        |
| BULGARIA                 | 2     | 0     | 0      | 0      | 0      | 0       | 0     | 0        | 0       | 0       | 0     | 0        | 0        | 0     | 0      | 0      | 0         | 2    | 0      | 0        | 0        |
| BURKINA FASO             | 0     | 0     | 0      | 0      | 0      | 0       | 0     | 0        | 0       | 0       | 0     | 0        | 0        | 0     | 0      | 0      | 0         | 0    | 0      | 0        | 0        |
| BURUNDI                  | 0     | 0     | 0      | 0      | 0      | 0       | 0     | 0        | 0       | 0       | 0     | 0        | 0        | 0     | 0      | 0      | 0         | 0    | 0      | 0        | 0        |
| CAMBODIA                 | 3     | 0     | 0      | 0      | 0      | 0       | 1     | 0        | 0       | 0       | 0     | 0        | 0        | 0     | 0      | 0      | 0         | 0    | 0      | 0        | 0        |
| CAMEROON                 | 0     | 0     | 0      | 0      | 0      | 0       | 0     | 0        | 0       | 0       | 0     | 0        | 0        | 0     | 0      | 0      | 0         | 0    | 0      | 0        | 0        |
| CANADA                   | 136   | 0     | 0      | 3      | 1      | 0       | 3     | 0        | 0       | 1       | 0     | 1        | 0        | 0     | 0      | 1      | 1         | 79   | 1      | 1        | 0        |
| CAPE VERDE               | 0     | 0     | 0      | 0      | 0      | 0       | 0     | 0        | 0       | 0       | 0     | 0        | 0        | 0     | 0      | 0      | 0         | 0    | 0      | 0        | 0        |
| CAYMAN ISLANDS           | 0     | 0     | 0      | 0      | 0      | 0       | 0     | 0        | 0       | 0       | 0     | 0        | 0        | 0     | 0      | 0      | 0         | 0    | 0      | 0        | 0        |
| CENTRAL AFRICAN REPUBLI  | 0     | 0     | 0      | 0      | 0      | 0       | 0     | 0        | 0       | 0       | 0     | 0        | 0        | 0     | 0      | 0      | 0         | 0    | 0      | 0        | 0        |
| CHAD                     | 0     | 0     | 0      | 0      | 0      | 0       | 0     | 0        | 0       | 0       | 0     | 0        | 0        | 0     | 0      | 0      | 0         | 0    | 0      | 0        | 0        |
| CHILE                    | 3     | 0     | 0      | 0      | 0      | 0       | 0     | 0        | 0       | 0       | 0     | 0        | 0        | 0     | 0      | 0      | 0         | 1    | 0      | 0        | 0        |
| CHINA                    | 64    | 0     | 0      | 0      | 0      | 0       | 0     | 0        | 0       | 0       | 0     | 0        | 0        | 1     | 0      | 0      | 0         | 47   | 0      | 0        | 0        |
| CHRISTMAS ISLAND         | 0     | 0     | 0      | 0      | 0      | 0       | 0     | 0        | 0       | 0       | 0     | 0        | 0        | 0     | 0      | 0      | 0         | 0    | 0      | 0        | 0        |
| COCOS (KEELING) ISLANDS  | 0     | 0     | 0      | 0      | 0      | 0       | 0     | 0        | 0       | 0       | 0     | 0        | 0        | 0     | 0      | 0      | 0         | 0    | 0      | 0        | 0        |
| COLOMBIA                 | 86    | 0     | 0      | 3      | 1      | 0       | 1     | 0        | 0       | 0       | 0     | 3        | 0        | 0     | 0      | 0      | 0         | 31   | 1      | 0        | 0        |
| COMOROS                  | 0     | 0     | 0      | 0      | 0      | 0       | 0     | 0        | 0       | 0       | 0     | 0        | 0        | 0     | 0      | 0      | 0         | 0    | 0      | 0        | 0        |
| CONGO                    | 1     | 0     | 0      | 0      | 0      | 0       | 0     | 0        | 0       | 0       | 0     | 0        | 0        | 0     | 0      | 0      | 0         | 1    | 0      | 0        | 0        |
| CONGO,THE DEMOCRATIC I   | 4     | 0     | 0      | 0      | 0      | 0       | 0     | 0        | 0       | 0       | 0     | 0        | 0        | 0     | 0      | 0      | 0         | 3    | 0      | 0        | 0        |
| COOK ISLANDS             | 0     | 0     | 0      | 0      | 0      | 0       | 0     | 0        | 0       | 0       | 0     | 0        | 0        | 0     | 0      | 0      | 0         | 0    | 0      | 0        | 0        |
| COSTA RICA               | 2     | 0     | 0      | 0      | 0      | 0       | 0     | 0        | 0       | 0       | 0     | 0        | 0        | 0     | 0      | 0      | 0         | 0    | 0      | 0        | 0        |
| CÔTE D'IVOIRE            | 0     | 0     | 0      | 0      | 0      | 0       | 0     | 0        | 0       | 0       | 0     | 0        | 0        | 0     | 0      | 0      | 0         | 0    | 0      | 0        | 0        |
| CROATIA                  | 1     | 0     | 0      | 0      | 0      | 0       | 0     | 0        | 0       | 0       | 0     | 0        | 0        | 0     | 0      | 0      | 0         | 0    | 0      | 0        | 0        |
| CUBA                     | 6     | 0     | 0      | 0      | 0      | 0       | 2     | 0        | 0       | 0       | 0     | 0        | 0        | 0     | 0      | 0      | 0         | 4    | 0      | 0        | 0        |
| CURAÇAO                  | 0     | 0     | 0      | 0      | 0      | 0       | 0     | 0        | 0       | 0       | 0     | 0        | 0        | 0     | 0      | 0      | 0         | 0    | 0      | 0        | 0        |
| CYPRUS                   | 0     | 0     | 0      | 0      | 0      | 0       | 0     | 0        | 0       | 0       | 0     | 0        | 0        | 0     | 0      | 0      | 0         | 0    | 0      | 0        | 0        |
| CZECH REPUBLIC           | 2     | 0     | 0      | 0      | 0      | 0       | 0     | 0        | 0       | 0       | 0     | 0        | 0        | 0     | 0      | 0      | 0         | 2    | 0      | 0        | 0        |
| DENMARK                  | 0     | 0     | 0      | 0      | 0      | 0       | 0     | 0        | 0       | 0       | 0     | 0        | 0        | 0     | 0      | 0      | 0         | 0    | 0      | 0        | 0        |
| DJIBOUTI                 | 0     | 0     | 0      | 0      | 0      | 0       | 0     | 0        | 0       | 0       | 0     | 0        | 0        | 0     | 0      | 0      | 0         | 0    | 0      | 0        | 0        |
| DOMINICA                 | 0     | 0     | 0      | 0      | 0      | 0       | 0     | 0        | 0       | 0       | 0     | 0        | 0        | 0     | 0      | 0      | 0         | 0    | 0      | 0        | 0        |

### May 2023 Totals by Location Moved From, and By County Moved To

| FROM / TO                | TOTAL | GRAYS |        |        |        |         |       |          |         |         |       |          |          |       |        |        |           |      |        |          |          |
|--------------------------|-------|-------|--------|--------|--------|---------|-------|----------|---------|---------|-------|----------|----------|-------|--------|--------|-----------|------|--------|----------|----------|
|                          |       | ADAMS | ASOTIN | BENTON | CHELAN | CLALLAM | CLARK | COLUMBIA | COWLITZ | DOUGLAS | FERRY | FRANKLIN | GARFIELD | GRANT | HARBOR | ISLAND | JEFFERSON | KING | KITSAP | KITTITAS | KLCKITAT |
| DOMINICAN REPUBLIC       | 3     | 0     | 0      | 0      | 0      | 0       | 0     | 0        | 0       | 0       | 0     | 0        | 0        | 0     | 0      | 0      | 0         | 2    | 0      | 0        | 0        |
| ECUADOR                  | 10    | 0     | 0      | 0      | 0      | 0       | 0     | 0        | 0       | 0       | 0     | 0        | 0        | 0     | 0      | 1      | 0         | 5    | 0      | 0        | 0        |
| EGYPT                    | 2     | 0     | 0      | 0      | 0      | 0       | 0     | 0        | 0       | 0       | 0     | 0        | 0        | 0     | 0      | 0      | 0         | 0    | 0      | 0        | 0        |
| EL SALVADOR              | 12    | 0     | 0      | 0      | 0      | 0       | 0     | 0        | 0       | 1       | 0     | 1        | 0        | 1     | 0      | 0      | 0         | 3    | 0      | 0        | 0        |
| ENGLAND                  | 3     | 0     | 0      | 0      | 0      | 0       | 0     | 0        | 0       | 0       | 0     | 0        | 0        | 0     | 0      | 0      | 0         | 1    | 0      | 0        | 0        |
| EQUATORIAL GUINEA        | 0     | 0     | 0      | 0      | 0      | 0       | 0     | 0        | 0       | 0       | 0     | 0        | 0        | 0     | 0      | 0      | 0         | 0    | 0      | 0        | 0        |
| ERITREA                  | 39    | 0     | 0      | 0      | 0      | 0       | 0     | 0        | 0       | 0       | 0     | 0        | 0        | 0     | 0      | 0      | 0         | 30   | 0      | 0        | 0        |
| ESTONIA                  | 0     | 0     | 0      | 0      | 0      | 0       | 0     | 0        | 0       | 0       | 0     | 0        | 0        | 0     | 0      | 0      | 0         | 0    | 0      | 0        | 0        |
| ETHIOPIA                 | 14    | 0     | 0      | 0      | 0      | 0       | 0     | 0        | 0       | 0       | 0     | 0        | 0        | 0     | 0      | 0      | 0         | 11   | 0      | 0        | 0        |
| FALKLAND ISLANDS (MALVI  | 0     | 0     | 0      | 0      | 0      | 0       | 0     | 0        | 0       | 0       | 0     | 0        | 0        | 0     | 0      | 0      | 0         | 0    | 0      | 0        | 0        |
| FAROE ISLANDS            | 0     | 0     | 0      | 0      | 0      | 0       | 0     | 0        | 0       | 0       | 0     | 0        | 0        | 0     | 0      | 0      | 0         | 0    | 0      | 0        | 0        |
| FEDERATED STATES OF MI   | 1     | 0     | 0      | 0      | 0      | 0       | 0     | 0        | 0       | 0       | 0     | 0        | 0        | 0     | 0      | 0      | 0         | 1    | 0      | 0        | 0        |
| FIJI                     | 3     | 0     | 0      | 0      | 0      | 0       | 1     | 0        | 0       | 0       | 0     | 0        | 0        | 0     | 0      | 0      | 0         | 0    | 0      | 0        | 0        |
| FINLAND                  | 0     | 0     | 0      | 0      | 0      | 0       | 0     | 0        | 0       | 0       | 0     | 0        | 0        | 0     | 0      | 0      | 0         | 0    | 0      | 0        | 0        |
| FRANCE                   | 4     | 0     | 0      | 0      | 0      | 0       | 0     | 0        | 0       | 0       | 0     | 0        | 0        | 0     | 0      | 0      | 0         | 2    | 0      | 0        | 0        |
| FRENCH GUIANA            | 0     | 0     | 0      | 0      | 0      | 0       | 0     | 0        | 0       | 0       | 0     | 0        | 0        | 0     | 0      | 0      | 0         | 0    | 0      | 0        | 0        |
| FRENCH POLYNESIA         | 0     | 0     | 0      | 0      | 0      | 0       | 0     | 0        | 0       | 0       | 0     | 0        | 0        | 0     | 0      | 0      | 0         | 0    | 0      | 0        | 0        |
| FRENCH SOUTHERN TERRIT   | 0     | 0     | 0      | 0      | 0      | 0       | 0     | 0        | 0       | 0       | 0     | 0        | 0        | 0     | 0      | 0      | 0         | 0    | 0      | 0        | 0        |
| GABON                    | 0     | 0     | 0      | 0      | 0      | 0       | 0     | 0        | 0       | 0       | 0     | 0        | 0        | 0     | 0      | 0      | 0         | 0    | 0      | 0        | 0        |
| GAMBIA                   | 1     | 0     | 0      | 0      | 0      | 0       | 0     | 0        | 0       | 0       | 0     | 0        | 0        | 0     | 0      | 0      | 0         | 0    | 0      | 0        | 0        |
| GEORGIA (Country)        | 0     | 0     | 0      | 0      | 0      | 0       | 0     | 0        | 0       | 0       | 0     | 0        | 0        | 0     | 0      | 0      | 0         | 0    | 0      | 0        | 0        |
| GERMANY                  | 32    | 0     | 0      | 0      | 0      | 0       | 1     | 0        | 0       | 0       | 0     | 0        | 0        | 0     | 0      | 0      | 0         | 18   | 0      | 0        | 0        |
| GHANA                    | 4     | 0     | 0      | 0      | 0      | 0       | 0     | 0        | 0       | 0       | 0     | 0        | 0        | 0     | 0      | 0      | 0         | 4    | 0      | 0        | 0        |
| GIBRALTAR                | 0     | 0     | 0      | 0      | 0      | 0       | 0     | 0        | 0       | 0       | 0     | 0        | 0        | 0     | 0      | 0      | 0         | 0    | 0      | 0        | 0        |
| GREECE                   | 0     | 0     | 0      | 0      | 0      | 0       | 0     | 0        | 0       | 0       | 0     | 0        | 0        | 0     | 0      | 0      | 0         | 0    | 0      | 0        | 0        |
| GREENLAND                | 0     | 0     | 0      | 0      | 0      | 0       | 0     | 0        | 0       | 0       | 0     | 0        | 0        | 0     | 0      | 0      | 0         | 0    | 0      | 0        | 0        |
| GRENADA                  | 0     | 0     | 0      | 0      | 0      | 0       | 0     | 0        | 0       | 0       | 0     | 0        | 0        | 0     | 0      | 0      | 0         | 0    | 0      | 0        | 0        |
| GUADELOUPE               | 0     | 0     | 0      | 0      | 0      | 0       | 0     | 0        | 0       | 0       | 0     | 0        | 0        | 0     | 0      | 0      | 0         | 0    | 0      | 0        | 0        |
| GUAM                     | 25    | 0     | 0      | 0      | 0      | 0       | 1     | 0        | 0       | 0       | 0     | 0        | 0        | 0     | 0      | 0      | 0         | 5    | 1      | 0        | 0        |
| GUATEMALA                | 16    | 0     | 0      | 0      | 0      | 0       | 1     | 0        | 0       | 0       | 1     | 0        | 0        | 1     | 0      | 0      | 0         | 9    | 0      | 0        | 0        |
| GUERNSEY                 | 0     | 0     | 0      | 0      | 0      | 0       | 0     | 0        | 0       | 0       | 0     | 0        | 0        | 0     | 0      | 0      | 0         | 0    | 0      | 0        | 0        |
| GUINEA                   | 0     | 0     | 0      | 0      | 0      | 0       | 0     | 0        | 0       | 0       | 0     | 0        | 0        | 0     | 0      | 0      | 0         | 0    | 0      | 0        | 0        |
| GUINEA-BISSAU            | 0     | 0     | 0      | 0      | 0      | 0       | 0     | 0        | 0       | 0       | 0     | 0        | 0        | 0     | 0      | 0      | 0         | 0    | 0      | 0        | 0        |
| GUYANA                   | 0     | 0     | 0      | 0      | 0      | 0       | 0     | 0        | 0       | 0       | 0     | 0        | 0        | 0     | 0      | 0      | 0         | 0    | 0      | 0        | 0        |
| HAITI                    | 7     | 0     | 0      | 0      | 0      | 0       | 0     | 0        | 0       | 0       | 0     | 0        | 0        | 0     | 1      | 0      | 0         | 4    | 0      | 0        | 0        |
| HEARD ISLAND-MCDONALD    | 0     | 0     | 0      | 0      | 0      | 0       | 0     | 0        | 0       | 0       | 0     | 0        | 0        | 0     | 0      | 0      | 0         | 0    | 0      | 0        | 0        |
| HOLY SEE (VATICAN CITY S | 0     | 0     | 0      | 0      | 0      | 0       | 0     | 0        | 0       | 0       | 0     | 0        | 0        | 0     | 0      | 0      | 0         | 0    | 0      | 0        | 0        |
| HONDURAS                 | 10    | 0     | 0      | 0      | 0      | 0       | 0     | 0        | 0       | 0       | 0     | 0        | 0        | 0     | 0      | 0      | 0         | 5    | 0      | 0        | 0        |
| HONG KONG                | 0     | 0     | 0      | 0      | 0      | 0       | 0     | 0        | 0       | 0       | 0     | 0        | 0        | 0     | 0      | 0      | 0         | 0    | 0      | 0        | 0        |
| HUNGARY                  | 0     | 0     | 0      | 0      | 0      | 0       | 0     | 0        | 0       | 0       | 0     | 0        | 0        | 0     | 0      | 0      | 0         | 0    | 0      | 0        | 0        |
| ICELAND                  | 0     | 0     | 0      | 0      | 0      | 0       | 0     | 0        | 0       | 0       | 0     | 0        | 0        | 0     | 0      | 0      | 0         | 0    | 0      | 0        | 0        |
| INDIA                    | 95    | 0     | 0      | 0      | 0      | 0       | 0     | 0        | 0       | 0       | 0     | 0        | 0        | 0     | 0      | 0      | 0         | 66   | 0      | 0        | 0        |
| INDONESIA                | 10    | 0     | 0      | 0      | 0      | 0       | 0     | 0        | 0       | 0       | 0     | 0        | 0        | 0     | 0      | 0      | 0         | 8    | 0      | 0        | 0        |
| IRAN                     | 0     | 0     | 0      | 0      | 0      | 0       | 0     | 0        | 0       | 0       | 0     | 0        | 0        | 0     | 0      | 0      | 0         | 0    | 0      | 0        | 0        |
| IRAQ                     | 0     | 0     | 0      | 0      | 0      | 0       | 0     | 0        | 0       | 0       | 0     | 0        | 0        | 0     | 0      | 0      | 0         | 0    | 0      | 0        | 0        |
| IRELAND                  | 2     | 0     | 0      | 0      | 0      | 0       | 0     | 0        | 0       | 0       | 0     | 0        | 0        | 0     | 0      | 0      | 0         | 1    | 0      | 0        | 0        |
| ISLE OF MAN              | 0     | 0     | 0      | 0      | 0      | 0       | 0     | 0        | 0       | 0       | 0     | 0        | 0        | 0     | 0      | 0      | 0         | 0    | 0      | 0        | 0        |
| ISRAEL                   | 3     | 0     | 0      | 0      | 0      | 0       | 0     | 0        | 0       | 0       | 0     | 0        | 0        | 0     | 0      | 0      | 0         | 3    | 0      | 0        | 0        |
| ITALY                    | 9     | 0     | 0      | 0      | 0      | 0       | 1     | 0        | 0       | 0       | 0     | 0        | 0        | 0     | 0      | 0      | 0         | 4    | 0      | 0        | 0        |
| JAMAICA                  | 8     | 0     | 0      | 0      | 1      | 0       | 0     | 0        | 0       | 0       | 0     | 0        | 0        | 0     | 0      | 0      | 0         | 2    | 0      | 0        | 0        |
| JAPAN                    | 51    | 0     | 0      | 0      | 0      | 0       | 2     | 0        | 0       | 0       | 0     | 0        | 0        | 0     | 0      | 2      | 0         | 34   | 1      | 0        | 0        |
| JERSEY                   | 0     | 0     | 0      | 0      | 0      | 0       | 0     | 0        | 0       | 0       | 0     | 0        | 0        | 0     | 0      | 0      | 0         | 0    | 0      | 0        | 0        |
| JORDAN                   | 1     | 0     | 0      | 0      | 0      | 0       | 0     | 0        | 0       | 0       | 0     | 0        | 0        | 0     | 0      | 0      | 0         | 1    | 0      | 0        | 0        |
| KAZAKHSTAN               | 14    | 0     | 0      | 0      | 0      | 0       | 0     | 0        | 0       | 0       | 0     | 0        | 0        | 0     | 0      | 0      | 0         | 7    | 0      | 0        | 0        |
| KENYA                    | 15    | 0     | 0      | 0      | 0      | 0       | 0     | 0        | 0       | 0       | 0     | 0        | 0        | 0     | 0      | 0      | 0         | 5    | 1      | 0        | 0        |
| KIRIBATI                 | 0     | 0     | 0      | 0      | 0      | 0       | 0     | 0        | 0       | 0       | 0     | 0        | 0        | 0     | 0      | 0      | 0         | 0    | 0      | 0        | 0        |
| KUWAIT                   | 0     | 0     | 0      | 0      | 0      | 0       | 0     | 0        | 0       | 0       | 0     | 0        | 0        | 0     | 0      | 0      | 0         | 0    | 0      | 0        | 0        |
| KYRGYZSTAN               | 158   | 0     | 0      | 0      | 0      | 0       | 3     | 0        | 0       | 0       | 0     | 0        | 0        | 0     | 0      | 0      | 0         | 129  | 0      | 0        | 0        |

May 2023 Totals by Location Moved From, and By County Moved To

| FROM / TO               | TOTAL | GRAYS |        |        |        |         |       |          |         |         |       |          |          |       |        |        |           |      |        |          |
|-------------------------|-------|-------|--------|--------|--------|---------|-------|----------|---------|---------|-------|----------|----------|-------|--------|--------|-----------|------|--------|----------|
|                         |       | ADAMS | ASOTIN | BENTON | CHELAN | CLALLAM | CLARK | COLUMBIA | COWLITZ | DOUGLAS | FERRY | FRANKLIN | GARFIELD | GRANT | HARBOR | ISLAND | JEFFERSON | KING | KITSAP | KITTITAS |
| LAOS                    | 0     | 0     | 0      | 0      | 0      | 0       | 0     | 0        | 0       | 0       | 0     | 0        | 0        | 0     | 0      | 0      | 0         | 0    | 0      | 0        |
| LATVIA                  | 3     | 0     | 0      | 0      | 0      | 0       | 0     | 0        | 0       | 0       | 0     | 0        | 0        | 0     | 0      | 0      | 0         | 2    | 0      | 0        |
| LEBANON                 | 0     | 0     | 0      | 0      | 0      | 0       | 0     | 0        | 0       | 0       | 0     | 0        | 0        | 0     | 0      | 0      | 0         | 0    | 0      | 0        |
| LESOTHO                 | 0     | 0     | 0      | 0      | 0      | 0       | 0     | 0        | 0       | 0       | 0     | 0        | 0        | 0     | 0      | 0      | 0         | 0    | 0      | 0        |
| LIBERIA                 | 0     | 0     | 0      | 0      | 0      | 0       | 0     | 0        | 0       | 0       | 0     | 0        | 0        | 0     | 0      | 0      | 0         | 0    | 0      | 0        |
| LIBYA                   | 0     | 0     | 0      | 0      | 0      | 0       | 0     | 0        | 0       | 0       | 0     | 0        | 0        | 0     | 0      | 0      | 0         | 0    | 0      | 0        |
| LIECHTENSTEIN           | 0     | 0     | 0      | 0      | 0      | 0       | 0     | 0        | 0       | 0       | 0     | 0        | 0        | 0     | 0      | 0      | 0         | 0    | 0      | 0        |
| LITHUANIA               | 4     | 0     | 0      | 0      | 0      | 0       | 0     | 0        | 0       | 0       | 0     | 0        | 0        | 0     | 0      | 0      | 0         | 1    | 0      | 0        |
| LUXEMBOURG              | 0     | 0     | 0      | 0      | 0      | 0       | 0     | 0        | 0       | 0       | 0     | 0        | 0        | 0     | 0      | 0      | 0         | 0    | 0      | 0        |
| MACAU                   | 0     | 0     | 0      | 0      | 0      | 0       | 0     | 0        | 0       | 0       | 0     | 0        | 0        | 0     | 0      | 0      | 0         | 0    | 0      | 0        |
| MACEDONIA               | 0     | 0     | 0      | 0      | 0      | 0       | 0     | 0        | 0       | 0       | 0     | 0        | 0        | 0     | 0      | 0      | 0         | 0    | 0      | 0        |
| MADAGASCAR              | 0     | 0     | 0      | 0      | 0      | 0       | 0     | 0        | 0       | 0       | 0     | 0        | 0        | 0     | 0      | 0      | 0         | 0    | 0      | 0        |
| MALAWI                  | 9     | 0     | 0      | 0      | 0      | 0       | 0     | 0        | 0       | 0       | 0     | 0        | 0        | 0     | 0      | 0      | 0         | 3    | 0      | 0        |
| MALAYSIA                | 1     | 0     | 0      | 0      | 0      | 0       | 0     | 0        | 0       | 0       | 0     | 0        | 0        | 0     | 0      | 0      | 0         | 1    | 0      | 0        |
| MALDIVES                | 0     | 0     | 0      | 0      | 0      | 0       | 0     | 0        | 0       | 0       | 0     | 0        | 0        | 0     | 0      | 0      | 0         | 0    | 0      | 0        |
| MALI                    | 0     | 0     | 0      | 0      | 0      | 0       | 0     | 0        | 0       | 0       | 0     | 0        | 0        | 0     | 0      | 0      | 0         | 0    | 0      | 0        |
| MALTA                   | 1     | 0     | 0      | 0      | 0      | 0       | 0     | 0        | 0       | 0       | 0     | 0        | 0        | 0     | 0      | 0      | 0         | 1    | 0      | 0        |
| MARSHALL ISLANDS        | 4     | 0     | 0      | 0      | 0      | 0       | 0     | 0        | 0       | 0       | 0     | 0        | 0        | 0     | 0      | 0      | 0         | 2    | 0      | 0        |
| MARTINIQUE              | 0     | 0     | 0      | 0      | 0      | 0       | 0     | 0        | 0       | 0       | 0     | 0        | 0        | 0     | 0      | 0      | 0         | 0    | 0      | 0        |
| MAURITANIA              | 1     | 0     | 0      | 0      | 0      | 0       | 0     | 0        | 0       | 0       | 0     | 0        | 0        | 0     | 0      | 0      | 0         | 0    | 0      | 0        |
| MAURITIUS               | 0     | 0     | 0      | 0      | 0      | 0       | 0     | 0        | 0       | 0       | 0     | 0        | 0        | 0     | 0      | 0      | 0         | 0    | 0      | 0        |
| MAYOTTE ISLAND          | 0     | 0     | 0      | 0      | 0      | 0       | 0     | 0        | 0       | 0       | 0     | 0        | 0        | 0     | 0      | 0      | 0         | 0    | 0      | 0        |
| MEXICO                  | 213   | 0     | 0      | 4      | 3      | 1       | 11    | 0        | 10      | 1       | 0     | 7        | 0        | 14    | 2      | 0      | 0         | 74   | 3      | 1        |
| MONACO                  | 0     | 0     | 0      | 0      | 0      | 0       | 0     | 0        | 0       | 0       | 0     | 0        | 0        | 0     | 0      | 0      | 0         | 0    | 0      | 0        |
| MONGOLIA                | 1     | 0     | 0      | 0      | 0      | 0       | 0     | 0        | 0       | 0       | 0     | 0        | 0        | 0     | 0      | 0      | 0         | 1    | 0      | 0        |
| MONTENEGRO              | 2     | 0     | 0      | 0      | 0      | 0       | 0     | 0        | 0       | 0       | 0     | 0        | 0        | 0     | 0      | 0      | 0         | 0    | 0      | 0        |
| MONTERRAT               | 0     | 0     | 0      | 0      | 0      | 0       | 0     | 0        | 0       | 0       | 0     | 0        | 0        | 0     | 0      | 0      | 0         | 0    | 0      | 0        |
| MOROCCO                 | 1     | 0     | 0      | 0      | 0      | 0       | 0     | 0        | 0       | 0       | 0     | 0        | 0        | 0     | 0      | 0      | 0         | 0    | 0      | 0        |
| MOZAMBIQUE              | 0     | 0     | 0      | 0      | 0      | 0       | 0     | 0        | 0       | 0       | 0     | 0        | 0        | 0     | 0      | 0      | 0         | 0    | 0      | 0        |
| MYANMAR                 | 1     | 0     | 0      | 0      | 0      | 0       | 0     | 0        | 0       | 0       | 0     | 0        | 0        | 0     | 0      | 0      | 0         | 0    | 0      | 0        |
| NAMIBIA                 | 1     | 0     | 0      | 0      | 0      | 0       | 0     | 0        | 0       | 0       | 0     | 0        | 0        | 0     | 0      | 0      | 0         | 1    | 0      | 0        |
| NAURU                   | 0     | 0     | 0      | 0      | 0      | 0       | 0     | 0        | 0       | 0       | 0     | 0        | 0        | 0     | 0      | 0      | 0         | 0    | 0      | 0        |
| NEPAL                   | 3     | 0     | 0      | 2      | 0      | 0       | 0     | 0        | 0       | 0       | 0     | 0        | 0        | 0     | 0      | 0      | 0         | 0    | 0      | 0        |
| NETHERLANDS             | 1     | 0     | 0      | 0      | 0      | 0       | 0     | 0        | 0       | 0       | 0     | 0        | 0        | 0     | 0      | 0      | 0         | 0    | 0      | 0        |
| NEW CALEDONIA           | 0     | 0     | 0      | 0      | 0      | 0       | 0     | 0        | 0       | 0       | 0     | 0        | 0        | 0     | 0      | 0      | 0         | 0    | 0      | 0        |
| NEW ZEALAND             | 4     | 0     | 0      | 0      | 0      | 0       | 0     | 0        | 0       | 0       | 0     | 0        | 0        | 0     | 0      | 0      | 0         | 3    | 0      | 0        |
| NICARAGUA               | 36    | 0     | 0      | 2      | 0      | 0       | 0     | 0        | 0       | 0       | 1     | 0        | 0        | 0     | 0      | 0      | 10        | 1    | 0      | 0        |
| NIGER                   | 0     | 0     | 0      | 0      | 0      | 0       | 0     | 0        | 0       | 0       | 0     | 0        | 0        | 0     | 0      | 0      | 0         | 0    | 0      | 0        |
| NIGERIA                 | 3     | 0     | 0      | 0      | 0      | 0       | 0     | 0        | 0       | 0       | 0     | 0        | 0        | 0     | 0      | 0      | 0         | 1    | 0      | 0        |
| NIUE                    | 0     | 0     | 0      | 0      | 0      | 0       | 0     | 0        | 0       | 0       | 0     | 0        | 0        | 0     | 0      | 0      | 0         | 0    | 0      | 0        |
| NORFOLK ISLAND          | 0     | 0     | 0      | 0      | 0      | 0       | 0     | 0        | 0       | 0       | 0     | 0        | 0        | 0     | 0      | 0      | 0         | 0    | 0      | 0        |
| NORTH KOREA             | 0     | 0     | 0      | 0      | 0      | 0       | 0     | 0        | 0       | 0       | 0     | 0        | 0        | 0     | 0      | 0      | 0         | 0    | 0      | 0        |
| NORTHERN IRELAND        | 0     | 0     | 0      | 0      | 0      | 0       | 0     | 0        | 0       | 0       | 0     | 0        | 0        | 0     | 0      | 0      | 0         | 0    | 0      | 0        |
| NORTHERN MARIANA ISLAND | 12    | 0     | 0      | 0      | 0      | 0       | 5     | 0        | 0       | 0       | 0     | 0        | 0        | 0     | 0      | 0      | 0         | 1    | 0      | 0        |
| NORWAY                  | 1     | 0     | 0      | 0      | 0      | 0       | 0     | 0        | 0       | 0       | 0     | 0        | 0        | 0     | 0      | 0      | 0         | 1    | 0      | 0        |
| OCCUPIED PALESTINIAN TE | 0     | 0     | 0      | 0      | 0      | 0       | 0     | 0        | 0       | 0       | 0     | 0        | 0        | 0     | 0      | 0      | 0         | 0    | 0      | 0        |
| OMAN                    | 0     | 0     | 0      | 0      | 0      | 0       | 0     | 0        | 0       | 0       | 0     | 0        | 0        | 0     | 0      | 0      | 0         | 0    | 0      | 0        |
| PAKISTAN                | 3     | 0     | 0      | 0      | 0      | 0       | 0     | 0        | 0       | 0       | 0     | 0        | 0        | 0     | 0      | 0      | 0         | 1    | 0      | 0        |
| PALAU                   | 0     | 0     | 0      | 0      | 0      | 0       | 0     | 0        | 0       | 0       | 0     | 0        | 0        | 0     | 0      | 0      | 0         | 0    | 0      | 0        |
| PANAMA                  | 0     | 0     | 0      | 0      | 0      | 0       | 0     | 0        | 0       | 0       | 0     | 0        | 0        | 0     | 0      | 0      | 0         | 0    | 0      | 0        |
| PAPUA NEW GUINEA        | 0     | 0     | 0      | 0      | 0      | 0       | 0     | 0        | 0       | 0       | 0     | 0        | 0        | 0     | 0      | 0      | 0         | 0    | 0      | 0        |
| PARAGUAY                | 0     | 0     | 0      | 0      | 0      | 0       | 0     | 0        | 0       | 0       | 0     | 0        | 0        | 0     | 0      | 0      | 0         | 0    | 0      | 0        |
| PERU                    | 31    | 0     | 0      | 1      | 0      | 0       | 0     | 0        | 0       | 0       | 0     | 0        | 2        | 0     | 0      | 0      | 10        | 0    | 0      | 0        |
| PHILIPPINES             | 14    | 0     | 0      | 0      | 0      | 0       | 0     | 0        | 0       | 0       | 0     | 0        | 0        | 0     | 1      | 0      | 5         | 3    | 0      | 0        |
| PITCAIRN                | 0     | 0     | 0      | 0      | 0      | 0       | 0     | 0        | 0       | 0       | 0     | 0        | 0        | 0     | 0      | 0      | 0         | 0    | 0      | 0        |
| POLAND                  | 6     | 0     | 0      | 0      | 0      | 0       | 0     | 0        | 0       | 0       | 0     | 0        | 0        | 0     | 0      | 0      | 2         | 0    | 0      | 0        |
| PORTUGAL                | 0     | 0     | 0      | 0      | 0      | 0       | 0     | 0        | 0       | 0       | 0     | 0        | 0        | 0     | 0      | 0      | 0         | 0    | 0      | 0        |
| PUERTO RICO             | 8     | 0     | 0      | 0      | 0      | 0       | 0     | 0        | 0       | 0       | 0     | 0        | 0        | 0     | 3      | 0      | 1         | 0    | 0      | 0        |

May 2023 Totals by Location Moved From, and By County Moved To

| FROM / TO                  | TOTAL | GRAYS |        |        |        |         |       |          |         |         |       |          |          |       |        |        |           |      |        |          |          |
|----------------------------|-------|-------|--------|--------|--------|---------|-------|----------|---------|---------|-------|----------|----------|-------|--------|--------|-----------|------|--------|----------|----------|
|                            |       | ADAMS | ASOTIN | BENTON | CHELAN | CLALLAM | CLARK | COLUMBIA | COWLITZ | DOUGLAS | FERRY | FRANKLIN | GARFIELD | GRANT | HARBOR | ISLAND | JEFFERSON | KING | KITSAP | KITTITAS | KLCKITAT |
| QATAR                      | 0     | 0     | 0      | 0      | 0      | 0       | 0     | 0        | 0       | 0       | 0     | 0        | 0        | 0     | 0      | 0      | 0         | 0    | 0      | 0        | 0        |
| REPUBLIC OF KOSOVO         | 0     | 0     | 0      | 0      | 0      | 0       | 0     | 0        | 0       | 0       | 0     | 0        | 0        | 0     | 0      | 0      | 0         | 0    | 0      | 0        | 0        |
| REPUBLIC OF MOLDOVA        | 9     | 0     | 0      | 0      | 0      | 0       | 1     | 0        | 0       | 0       | 0     | 0        | 0        | 0     | 1      | 0      | 0         | 7    | 0      | 0        | 0        |
| RÉUNION ISLAND             | 0     | 0     | 0      | 0      | 0      | 0       | 0     | 0        | 0       | 0       | 0     | 0        | 0        | 0     | 0      | 0      | 0         | 0    | 0      | 0        | 0        |
| ROMANIA                    | 28    | 0     | 0      | 0      | 0      | 0       | 3     | 0        | 0       | 0       | 0     | 0        | 0        | 0     | 0      | 0      | 18        | 0    | 0      | 0        | 0        |
| RUSSIA                     | 169   | 0     | 0      | 0      | 0      | 0       | 21    | 0        | 0       | 0       | 0     | 0        | 0        | 0     | 0      | 0      | 97        | 0    | 0      | 0        | 0        |
| RWANDA                     | 0     | 0     | 0      | 0      | 0      | 0       | 0     | 0        | 0       | 0       | 0     | 0        | 0        | 0     | 0      | 0      | 0         | 0    | 0      | 0        | 0        |
| SAMOA                      | 0     | 0     | 0      | 0      | 0      | 0       | 0     | 0        | 0       | 0       | 0     | 0        | 0        | 0     | 0      | 0      | 0         | 0    | 0      | 0        | 0        |
| SAN MARINO                 | 0     | 0     | 0      | 0      | 0      | 0       | 0     | 0        | 0       | 0       | 0     | 0        | 0        | 0     | 0      | 0      | 0         | 0    | 0      | 0        | 0        |
| SAO TOME AND PRINCEPE      | 0     | 0     | 0      | 0      | 0      | 0       | 0     | 0        | 0       | 0       | 0     | 0        | 0        | 0     | 0      | 0      | 0         | 0    | 0      | 0        | 0        |
| SAUDI ARABIA               | 0     | 0     | 0      | 0      | 0      | 0       | 0     | 0        | 0       | 0       | 0     | 0        | 0        | 0     | 0      | 0      | 0         | 0    | 0      | 0        | 0        |
| SCOTLAND                   | 1     | 0     | 0      | 0      | 0      | 0       | 0     | 0        | 0       | 0       | 0     | 0        | 0        | 0     | 0      | 0      | 0         | 0    | 0      | 0        | 0        |
| SENEGAL                    | 2     | 0     | 0      | 0      | 0      | 0       | 0     | 0        | 0       | 0       | 0     | 0        | 0        | 0     | 0      | 0      | 2         | 0    | 0      | 0        | 0        |
| SERBIA                     | 8     | 0     | 0      | 0      | 0      | 0       | 1     | 0        | 0       | 0       | 0     | 0        | 0        | 0     | 0      | 0      | 1         | 0    | 0      | 0        | 0        |
| SEYCHELLES                 | 0     | 0     | 0      | 0      | 0      | 0       | 0     | 0        | 0       | 0       | 0     | 0        | 0        | 0     | 0      | 0      | 0         | 0    | 0      | 0        | 0        |
| SIERRA LEONE               | 0     | 0     | 0      | 0      | 0      | 0       | 0     | 0        | 0       | 0       | 0     | 0        | 0        | 0     | 0      | 0      | 0         | 0    | 0      | 0        | 0        |
| SINGAPORE                  | 0     | 0     | 0      | 0      | 0      | 0       | 0     | 0        | 0       | 0       | 0     | 0        | 0        | 0     | 0      | 0      | 0         | 0    | 0      | 0        | 0        |
| SINT MAARTEN               | 0     | 0     | 0      | 0      | 0      | 0       | 0     | 0        | 0       | 0       | 0     | 0        | 0        | 0     | 0      | 0      | 0         | 0    | 0      | 0        | 0        |
| SLOVAKIA                   | 0     | 0     | 0      | 0      | 0      | 0       | 0     | 0        | 0       | 0       | 0     | 0        | 0        | 0     | 0      | 0      | 0         | 0    | 0      | 0        | 0        |
| SLOVENIA                   | 0     | 0     | 0      | 0      | 0      | 0       | 0     | 0        | 0       | 0       | 0     | 0        | 0        | 0     | 0      | 0      | 0         | 0    | 0      | 0        | 0        |
| SOLOMON ISLANDS            | 0     | 0     | 0      | 0      | 0      | 0       | 0     | 0        | 0       | 0       | 0     | 0        | 0        | 0     | 0      | 0      | 0         | 0    | 0      | 0        | 0        |
| SOMALIA                    | 4     | 0     | 0      | 0      | 0      | 0       | 0     | 0        | 0       | 0       | 0     | 0        | 0        | 0     | 0      | 0      | 4         | 0    | 0      | 0        | 0        |
| SOUTH AFRICA               | 6     | 0     | 0      | 0      | 0      | 0       | 0     | 0        | 0       | 0       | 0     | 0        | 0        | 0     | 0      | 0      | 3         | 0    | 0      | 0        | 0        |
| SOUTH GEORGIA-SANDWIC      | 0     | 0     | 0      | 0      | 0      | 0       | 0     | 0        | 0       | 0       | 0     | 0        | 0        | 0     | 0      | 0      | 0         | 0    | 0      | 0        | 0        |
| SOUTH KOREA                | 66    | 0     | 0      | 2      | 0      | 0       | 5     | 0        | 0       | 0       | 0     | 0        | 0        | 0     | 0      | 0      | 38        | 1    | 0      | 0        | 0        |
| SOUTH SUDAN                | 1     | 0     | 0      | 0      | 0      | 0       | 0     | 0        | 0       | 0       | 0     | 0        | 0        | 0     | 0      | 0      | 1         | 0    | 0      | 0        | 0        |
| SPAIN                      | 2     | 0     | 0      | 0      | 0      | 0       | 0     | 0        | 0       | 0       | 0     | 0        | 0        | 0     | 0      | 0      | 1         | 0    | 0      | 0        | 0        |
| SRI LANKA                  | 0     | 0     | 0      | 0      | 0      | 0       | 0     | 0        | 0       | 0       | 0     | 0        | 0        | 0     | 0      | 0      | 0         | 0    | 0      | 0        | 0        |
| ST. BARTHÉLEMY             | 0     | 0     | 0      | 0      | 0      | 0       | 0     | 0        | 0       | 0       | 0     | 0        | 0        | 0     | 0      | 0      | 0         | 0    | 0      | 0        | 0        |
| ST. HELENA                 | 0     | 0     | 0      | 0      | 0      | 0       | 0     | 0        | 0       | 0       | 0     | 0        | 0        | 0     | 0      | 0      | 0         | 0    | 0      | 0        | 0        |
| ST. KITTS NEVIS            | 0     | 0     | 0      | 0      | 0      | 0       | 0     | 0        | 0       | 0       | 0     | 0        | 0        | 0     | 0      | 0      | 0         | 0    | 0      | 0        | 0        |
| ST. LUCIA                  | 0     | 0     | 0      | 0      | 0      | 0       | 0     | 0        | 0       | 0       | 0     | 0        | 0        | 0     | 0      | 0      | 0         | 0    | 0      | 0        | 0        |
| ST. PIERRE AND MIQUELON    | 0     | 0     | 0      | 0      | 0      | 0       | 0     | 0        | 0       | 0       | 0     | 0        | 0        | 0     | 0      | 0      | 0         | 0    | 0      | 0        | 0        |
| ST. VINCENT AND THE GREI   | 0     | 0     | 0      | 0      | 0      | 0       | 0     | 0        | 0       | 0       | 0     | 0        | 0        | 0     | 0      | 0      | 0         | 0    | 0      | 0        | 0        |
| SUDAN                      | 0     | 0     | 0      | 0      | 0      | 0       | 0     | 0        | 0       | 0       | 0     | 0        | 0        | 0     | 0      | 0      | 0         | 0    | 0      | 0        | 0        |
| SURINAME                   | 0     | 0     | 0      | 0      | 0      | 0       | 0     | 0        | 0       | 0       | 0     | 0        | 0        | 0     | 0      | 0      | 0         | 0    | 0      | 0        | 0        |
| SVALBARD AND JAN MAYEI     | 0     | 0     | 0      | 0      | 0      | 0       | 0     | 0        | 0       | 0       | 0     | 0        | 0        | 0     | 0      | 0      | 0         | 0    | 0      | 0        | 0        |
| SWAZILAND Renamed as ESWAT | 0     | 0     | 0      | 0      | 0      | 0       | 0     | 0        | 0       | 0       | 0     | 0        | 0        | 0     | 0      | 0      | 0         | 0    | 0      | 0        | 0        |
| SWEDEN                     | 0     | 0     | 0      | 0      | 0      | 0       | 0     | 0        | 0       | 0       | 0     | 0        | 0        | 0     | 0      | 0      | 0         | 0    | 0      | 0        | 0        |
| SWITZERLAND                | 1     | 0     | 0      | 0      | 0      | 0       | 0     | 0        | 0       | 0       | 0     | 0        | 0        | 0     | 0      | 0      | 0         | 0    | 0      | 0        | 0        |
| SYRIAN ARAB REPUBLIC       | 0     | 0     | 0      | 0      | 0      | 0       | 0     | 0        | 0       | 0       | 0     | 0        | 0        | 0     | 0      | 0      | 0         | 0    | 0      | 0        | 0        |
| TAIWAN                     | 27    | 0     | 0      | 0      | 0      | 0       | 1     | 0        | 0       | 0       | 0     | 0        | 0        | 0     | 0      | 0      | 23        | 0    | 0      | 0        | 0        |
| TAJIKISTAN                 | 1     | 0     | 0      | 0      | 0      | 0       | 0     | 0        | 0       | 0       | 0     | 0        | 0        | 0     | 0      | 0      | 1         | 0    | 0      | 0        | 0        |
| TANZANIA                   | 11    | 0     | 1      | 0      | 0      | 0       | 2     | 0        | 0       | 0       | 0     | 0        | 0        | 0     | 0      | 0      | 1         | 0    | 0      | 0        | 0        |
| THAILAND                   | 4     | 0     | 0      | 0      | 0      | 0       | 2     | 0        | 0       | 0       | 0     | 0        | 0        | 0     | 0      | 0      | 0         | 0    | 0      | 0        | 0        |
| TIMOR-LESTE                | 0     | 0     | 0      | 0      | 0      | 0       | 0     | 0        | 0       | 0       | 0     | 0        | 0        | 0     | 0      | 0      | 0         | 0    | 0      | 0        | 0        |
| TOGO                       | 0     | 0     | 0      | 0      | 0      | 0       | 0     | 0        | 0       | 0       | 0     | 0        | 0        | 0     | 0      | 0      | 0         | 0    | 0      | 0        | 0        |
| TOKELAU                    | 0     | 0     | 0      | 0      | 0      | 0       | 0     | 0        | 0       | 0       | 0     | 0        | 0        | 0     | 0      | 0      | 0         | 0    | 0      | 0        | 0        |
| TONGA                      | 0     | 0     | 0      | 0      | 0      | 0       | 0     | 0        | 0       | 0       | 0     | 0        | 0        | 0     | 0      | 0      | 0         | 0    | 0      | 0        | 0        |
| TRINIDAD AND TOBAGO        | 0     | 0     | 0      | 0      | 0      | 0       | 0     | 0        | 0       | 0       | 0     | 0        | 0        | 0     | 0      | 0      | 0         | 0    | 0      | 0        | 0        |
| TUNISIA                    | 1     | 0     | 0      | 0      | 0      | 0       | 0     | 0        | 0       | 0       | 0     | 0        | 0        | 0     | 0      | 0      | 1         | 0    | 0      | 0        | 0        |
| TURKEY                     | 13    | 0     | 0      | 0      | 0      | 0       | 1     | 0        | 0       | 0       | 0     | 0        | 0        | 0     | 0      | 0      | 9         | 1    | 0      | 0        | 0        |
| TURKMENISTAN               | 3     | 0     | 0      | 0      | 0      | 0       | 0     | 0        | 0       | 0       | 0     | 0        | 0        | 0     | 0      | 0      | 3         | 0    | 0      | 0        | 0        |
| TURKS AND CAICOS ISLANI    | 0     | 0     | 0      | 0      | 0      | 0       | 0     | 0        | 0       | 0       | 0     | 0        | 0        | 0     | 0      | 0      | 0         | 0    | 0      | 0        | 0        |
| TUVALU                     | 0     | 0     | 0      | 0      | 0      | 0       | 0     | 0        | 0       | 0       | 0     | 0        | 0        | 0     | 0      | 0      | 0         | 0    | 0      | 0        | 0        |
| UGANDA                     | 1     | 0     | 0      | 0      | 0      | 0       | 0     | 0        | 0       | 0       | 0     | 0        | 0        | 0     | 0      | 0      | 0         | 0    | 0      | 0        | 0        |
| UKRAINE                    | 161   | 0     | 0      | 0      | 0      | 0       | 16    | 0        | 0       | 0       | 0     | 2        | 0        | 1     | 5      | 0      | 61        | 0    | 0      | 0        | 0        |
| UNITED ARAB EMIRATES       | 5     | 0     | 0      | 0      | 0      | 0       | 1     | 0        | 0       | 0       | 0     | 0        | 0        | 0     | 0      | 0      | 2         | 0    | 0      | 0        | 0        |



**May 2023 Totals by Location Moved From, and By County Moved To**

| FROM / TO               | TOTAL        | GRAYS    |           |            |           |            |             |          |            |           |          |           |          |            |           |            |           |             |            |           |           |
|-------------------------|--------------|----------|-----------|------------|-----------|------------|-------------|----------|------------|-----------|----------|-----------|----------|------------|-----------|------------|-----------|-------------|------------|-----------|-----------|
|                         |              | ADAMS    | ASOTIN    | BENTON     | CHELAN    | CLALLAM    | CLARK       | COLUMBIA | COWLITZ    | DOUGLAS   | FERRY    | FRANKLIN  | GARFIELD | GRANT      | HARBOR    | ISLAND     | JEFFERSON | KING        | KITSAP     | KITTITAS  | KLCKITAT  |
| UNITED KINGDOM          | 18           | 0        | 0         | 2          | 0         | 0          | 1           | 0        | 0          | 0         | 0        | 0         | 0        | 0          | 0         | 0          | 0         | 11          | 1          | 0         | 0         |
| URUGUAY                 | 0            | 0        | 0         | 0          | 0         | 0          | 0           | 0        | 0          | 0         | 0        | 0         | 0        | 0          | 0         | 0          | 0         | 0           | 0          | 0         | 0         |
| US MINOR OUTLYING ISLAN | 0            | 0        | 0         | 0          | 0         | 0          | 0           | 0        | 0          | 0         | 0        | 0         | 0        | 0          | 0         | 0          | 0         | 0           | 0          | 0         | 0         |
| UZBEKISTAN              | 6            | 0        | 0         | 0          | 0         | 0          | 0           | 0        | 0          | 0         | 0        | 0         | 0        | 0          | 0         | 0          | 0         | 6           | 0          | 0         | 0         |
| VANUATU                 | 0            | 0        | 0         | 0          | 0         | 0          | 0           | 0        | 0          | 0         | 0        | 0         | 0        | 0          | 0         | 0          | 0         | 0           | 0          | 0         | 0         |
| VENEZUELA               | 77           | 1        | 0         | 8          | 0         | 0          | 2           | 0        | 0          | 0         | 0        | 0         | 0        | 0          | 0         | 0          | 0         | 43          | 0          | 1         | 0         |
| VIET NAM                | 3            | 0        | 0         | 0          | 0         | 0          | 0           | 0        | 0          | 0         | 0        | 0         | 0        | 0          | 0         | 0          | 0         | 1           | 0          | 0         | 0         |
| VIRGIN ISLANDS          | 1            | 0        | 0         | 0          | 0         | 0          | 0           | 0        | 0          | 0         | 0        | 0         | 0        | 0          | 0         | 0          | 0         | 1           | 0          | 0         | 0         |
| VIRGIN ISLANDS, BRITISH | 0            | 0        | 0         | 0          | 0         | 0          | 0           | 0        | 0          | 0         | 0        | 0         | 0        | 0          | 0         | 0          | 0         | 0           | 0          | 0         | 0         |
| VIRGIN ISLANDS, U.S.    | 0            | 0        | 0         | 0          | 0         | 0          | 0           | 0        | 0          | 0         | 0        | 0         | 0        | 0          | 0         | 0          | 0         | 0           | 0          | 0         | 0         |
| WALES                   | 0            | 0        | 0         | 0          | 0         | 0          | 0           | 0        | 0          | 0         | 0        | 0         | 0        | 0          | 0         | 0          | 0         | 0           | 0          | 0         | 0         |
| WALLIS-FUTUNA           | 0            | 0        | 0         | 0          | 0         | 0          | 0           | 0        | 0          | 0         | 0        | 0         | 0        | 0          | 0         | 0          | 0         | 0           | 0          | 0         | 0         |
| WESTERN SAHARA          | 0            | 0        | 0         | 0          | 0         | 0          | 0           | 0        | 0          | 0         | 0        | 0         | 0        | 0          | 0         | 0          | 0         | 0           | 0          | 0         | 0         |
| YEMEN                   | 0            | 0        | 0         | 0          | 0         | 0          | 0           | 0        | 0          | 0         | 0        | 0         | 0        | 0          | 0         | 0          | 0         | 0           | 0          | 0         | 0         |
| ZAMBIA                  | 6            | 0        | 0         | 0          | 0         | 0          | 0           | 0        | 0          | 0         | 0        | 0         | 0        | 0          | 0         | 0          | 0         | 4           | 0          | 0         | 0         |
| ZIMBABWE                | 1            | 0        | 0         | 0          | 0         | 0          | 0           | 0        | 0          | 0         | 0        | 0         | 0        | 0          | 0         | 0          | 0         | 0           | 0          | 0         | 0         |
| <b>** TOTAL **</b>      | <b>13084</b> | <b>6</b> | <b>50</b> | <b>265</b> | <b>71</b> | <b>123</b> | <b>1247</b> | <b>1</b> | <b>168</b> | <b>29</b> | <b>8</b> | <b>89</b> | <b>2</b> | <b>102</b> | <b>93</b> | <b>192</b> | <b>45</b> | <b>4710</b> | <b>453</b> | <b>36</b> | <b>64</b> |

### May 2023 Totals by Location Moved From, and By County Moved To

| FROM / TO            | LEWIS | LINCOLN | MASON | OKANAGON | PACIFIC | PEND OREILLE | PIERCE | SAN JUAN | SKAGIT | SKAMANIA | SNOHOMISH | SPOKANE | STEVENS | THURSTON | WAHIAKIUM | WALLA WALLA | WHATCOM | WHITMAN | YAKIMA | UNKNOWN |
|----------------------|-------|---------|-------|----------|---------|--------------|--------|----------|--------|----------|-----------|---------|---------|----------|-----------|-------------|---------|---------|--------|---------|
| ALABAMA              | 0     | 0       | 0     | 0        | 0       | 0            | 12     | 0        | 2      | 0        | 2         | 2       | 1       | 4        | 0         | 0           | 2       | 1       | 0      | 2       |
| ALASKA               | 4     | 0       | 0     | 2        | 0       | 3            | 32     | 0        | 0      | 0        | 17        | 7       | 0       | 6        | 0         | 1           | 9       | 1       | 4      | 3       |
| ARIZONA              | 9     | 0       | 5     | 2        | 1       | 0            | 66     | 6        | 12     | 0        | 51        | 44      | 10      | 24       | 1         | 4           | 22      | 3       | 10     | 8       |
| ARKANSAS             | 0     | 0       | 0     | 0        | 0       | 0            | 3      | 0        | 0      | 0        | 7         | 3       | 1       | 3        | 0         | 4           | 3       | 0       | 0      | 1       |
| CALIFORNIA           | 18    | 0       | 17    | 7        | 7       | 3            | 229    | 13       | 34     | 1        | 198       | 115     | 8       | 103      | 0         | 16          | 75      | 7       | 24     | 47      |
| COLORADO             | 3     | 0       | 8     | 1        | 3       | 0            | 41     | 0        | 9      | 0        | 31        | 40      | 1       | 22       | 0         | 2           | 26      | 6       | 1      | 7       |
| CONNECTICUT          | 1     | 0       | 1     | 0        | 0       | 0            | 4      | 0        | 0      | 0        | 1         | 2       | 0       | 1        | 0         | 0           | 1       | 0       | 0      | 3       |
| DELAWARE             | 0     | 0       | 0     | 0        | 0       | 0            | 2      | 0        | 0      | 0        | 0         | 0       | 0       | 0        | 0         | 0           | 0       | 0       | 0      | 0       |
| FLORIDA              | 5     | 1       | 3     | 2        | 1       | 0            | 79     | 1        | 11     | 0        | 70        | 30      | 0       | 26       | 0         | 2           | 16      | 2       | 11     | 9       |
| GEORGIA              | 0     | 0       | 0     | 0        | 0       | 0            | 20     | 0        | 2      | 0        | 29        | 4       | 0       | 12       | 0         | 3           | 2       | 0       | 1      | 2       |
| HAWAII               | 0     | 0       | 3     | 0        | 0       | 0            | 33     | 0        | 0      | 1        | 17        | 9       | 0       | 10       | 0         | 0           | 3       | 2       | 0      | 4       |
| IDAHO                | 2     | 1       | 1     | 2        | 4       | 9            | 28     | 3        | 6      | 0        | 23        | 133     | 10      | 9        | 0         | 4           | 6       | 29      | 5      | 10      |
| ILLINOIS             | 0     | 0       | 0     | 0        | 0       | 0            | 21     | 0        | 1      | 0        | 20        | 12      | 2       | 5        | 0         | 1           | 8       | 0       | 1      | 6       |
| INDIANA              | 0     | 0       | 0     | 0        | 0       | 0            | 13     | 0        | 1      | 0        | 12        | 6       | 2       | 2        | 0         | 0           | 3       | 2       | 2      | 1       |
| IOWA                 | 0     | 0       | 2     | 0        | 1       | 0            | 8      | 1        | 0      | 0        | 7         | 7       | 0       | 2        | 0         | 1           | 5       | 0       | 1      | 1       |
| KANSAS               | 1     | 0       | 0     | 0        | 2       | 0            | 11     | 0        | 0      | 0        | 7         | 8       | 0       | 6        | 0         | 1           | 3       | 0       | 2      | 1       |
| KENTUCKY             | 1     | 0       | 0     | 0        | 1       | 0            | 13     | 0        | 0      | 0        | 2         | 7       | 0       | 0        | 0         | 2           | 4       | 0       | 1      | 1       |
| LOUISIANA            | 3     | 0       | 0     | 1        | 1       | 0            | 5      | 1        | 1      | 0        | 7         | 5       | 0       | 6        | 0         | 0           | 4       | 1       | 2      | 1       |
| MAINE                | 0     | 0       | 0     | 0        | 0       | 0            | 3      | 1        | 1      | 0        | 3         | 0       | 1       | 1        | 0         | 0           | 1       | 1       | 1      | 0       |
| MARYLAND             | 1     | 0       | 2     | 0        | 1       | 0            | 13     | 1        | 0      | 0        | 9         | 4       | 0       | 4        | 0         | 0           | 3       | 0       | 1      | 4       |
| MASSACHUSETTS        | 0     | 0       | 1     | 0        | 0       | 0            | 10     | 0        | 0      | 0        | 7         | 3       | 0       | 2        | 0         | 2           | 1       | 1       | 1      | 0       |
| MICHIGAN             | 0     | 0       | 0     | 1        | 1       | 0            | 23     | 0        | 0      | 0        | 9         | 7       | 0       | 6        | 0         | 0           | 5       | 1       | 1      | 2       |
| MINNESOTA            | 3     | 0       | 0     | 1        | 3       | 0            | 14     | 1        | 5      | 0        | 14        | 9       | 0       | 13       | 0         | 1           | 7       | 0       | 0      | 3       |
| MISSISSIPPI          | 1     | 0       | 0     | 0        | 0       | 0            | 5      | 0        | 0      | 0        | 1         | 2       | 0       | 1        | 0         | 0           | 1       | 0       | 0      | 0       |
| MISSOURI             | 0     | 4       | 2     | 0        | 0       | 1            | 22     | 0        | 1      | 0        | 10        | 8       | 0       | 10       | 0         | 0           | 2       | 2       | 1      | 5       |
| MONTANA              | 1     | 0       | 1     | 1        | 0       | 1            | 16     | 0        | 4      | 1        | 10        | 29      | 3       | 7        | 1         | 1           | 8       | 2       | 2      | 6       |
| NEBRASKA             | 0     | 0       | 2     | 2        | 0       | 3            | 7      | 0        | 1      | 0        | 1         | 4       | 0       | 5        | 0         | 0           | 0       | 0       | 0      | 0       |
| NEVADA               | 2     | 0       | 1     | 4        | 3       | 0            | 30     | 0        | 3      | 0        | 23        | 22      | 5       | 10       | 0         | 0           | 8       | 1       | 7      | 5       |
| NEW HAMPSHIRE        | 1     | 0       | 0     | 0        | 0       | 0            | 2      | 0        | 0      | 0        | 1         | 2       | 0       | 1        | 0         | 0           | 1       | 0       | 0      | 0       |
| NEW JERSEY           | 0     | 0       | 0     | 0        | 0       | 0            | 8      | 1        | 1      | 0        | 12        | 2       | 0       | 3        | 0         | 0           | 3       | 0       | 0      | 3       |
| NEW MEXICO           | 0     | 0       | 0     | 0        | 0       | 0            | 7      | 0        | 2      | 1        | 6         | 6       | 0       | 7        | 0         | 1           | 3       | 0       | 2      | 3       |
| NEW YORK             | 1     | 2       | 2     | 0        | 0       | 0            | 22     | 0        | 1      | 0        | 29        | 11      | 2       | 10       | 0         | 1           | 7       | 1       | 1      | 7       |
| NORTH CAROLINA       | 0     | 0       | 1     | 2        | 1       | 0            | 40     | 0        | 5      | 0        | 19        | 8       | 0       | 12       | 0         | 2           | 6       | 0       | 3      | 2       |
| NORTH DAKOTA         | 2     | 0       | 1     | 0        | 0       | 0            | 5      | 0        | 0      | 0        | 3         | 3       | 0       | 3        | 0         | 1           | 1       | 1       | 2      | 0       |
| OHIO                 | 1     | 0       | 1     | 0        | 0       | 0            | 18     | 1        | 0      | 0        | 5         | 3       | 0       | 9        | 0         | 0           | 1       | 1       | 1      | 7       |
| OKLAHOMA             | 1     | 0       | 1     | 0        | 1       | 0            | 17     | 0        | 1      | 0        | 8         | 2       | 1       | 1        | 0         | 0           | 1       | 1       | 0      | 1       |
| OREGON               | 22    | 1       | 7     | 2        | 17      | 2            | 60     | 4        | 8      | 17       | 48        | 43      | 5       | 37       | 1         | 26          | 30      | 4       | 20     | 30      |
| PENNSYLVANIA         | 0     | 0       | 0     | 1        | 0       | 0            | 22     | 0        | 2      | 0        | 11        | 7       | 1       | 2        | 0         | 0           | 5       | 2       | 0      | 1       |
| RHODE ISLAND         | 0     | 0       | 0     | 0        | 0       | 0            | 2      | 0        | 0      | 0        | 0         | 3       | 0       | 0        | 0         | 0           | 0       | 0       | 0      | 0       |
| SOUTH CAROLINA       | 0     | 0       | 1     | 0        | 0       | 0            | 17     | 0        | 2      | 0        | 8         | 6       | 0       | 5        | 0         | 0           | 0       | 0       | 0      | 1       |
| SOUTH DAKOTA         | 0     | 0       | 0     | 1        | 0       | 0            | 3      | 0        | 0      | 0        | 6         | 6       | 1       | 1        | 0         | 0           | 1       | 1       | 1      | 1       |
| TENNESSEE            | 1     | 0       | 0     | 0        | 0       | 0            | 21     | 0        | 2      | 0        | 8         | 5       | 0       | 21       | 0         | 0           | 3       | 0       | 2      | 3       |
| TEXAS                | 2     | 1       | 0     | 1        | 3       | 0            | 121    | 4        | 7      | 2        | 65        | 44      | 2       | 50       | 2         | 4           | 24      | 1       | 13     | 14      |
| UTAH                 | 2     | 0       | 3     | 0        | 0       | 1            | 16     | 2        | 1      | 0        | 15        | 17      | 1       | 8        | 0         | 1           | 8       | 2       | 3      | 4       |
| VERMONT              | 0     | 0       | 2     | 0        | 0       | 0            | 0      | 0        | 0      | 0        | 0         | 1       | 2       | 0        | 0         | 0           | 1       | 0       | 0      | 0       |
| VIRGINIA             | 1     | 0       | 1     | 0        | 0       | 0            | 30     | 0        | 3      | 0        | 13        | 7       | 0       | 13       | 0         | 0           | 8       | 2       | 0      | 5       |
| WASHINGTON           | 0     | 0       | 0     | 0        | 0       | 0            | 0      | 0        | 0      | 0        | 0         | 0       | 0       | 0        | 0         | 0           | 0       | 0       | 0      | 0       |
| WEST VIRGINIA        | 0     | 0       | 0     | 0        | 0       | 0            | 4      | 0        | 0      | 0        | 0         | 0       | 0       | 0        | 0         | 0           | 0       | 0       | 0      | 1       |
| WISCONSIN            | 0     | 0       | 1     | 1        | 0       | 0            | 11     | 0        | 2      | 0        | 12        | 3       | 0       | 5        | 0         | 0           | 6       | 1       | 1      | 2       |
| WYOMING              | 0     | 0       | 0     | 0        | 1       | 1            | 1      | 0        | 1      | 0        | 2         | 6       | 0       | 0        | 0         | 0           | 0       | 1       | 0      | 0       |
| DISTRICT OF COLUMBIA | 0     | 0       | 0     | 0        | 0       | 0            | 2      | 0        | 0      | 0        | 2         | 0       | 0       | 0        | 0         | 1           | 0       | 1       | 0      | 0       |
| AFGHANISTAN          | 0     | 0       | 0     | 0        | 0       | 0            | 0      | 0        | 0      | 0        | 0         | 0       | 0       | 0        | 0         | 0           | 0       | 0       | 0      | 0       |
| ÅLAND ISLANDS        | 0     | 0       | 0     | 0        | 0       | 0            | 0      | 0        | 0      | 0        | 0         | 0       | 0       | 0        | 0         | 0           | 0       | 0       | 0      | 0       |
| ALBANIA              | 0     | 0       | 0     | 0        | 0       | 0            | 0      | 0        | 0      | 0        | 0         | 0       | 0       | 0        | 0         | 0           | 0       | 0       | 0      | 0       |
| ALGERIA              | 0     | 0       | 0     | 0        | 0       | 0            | 0      | 0        | 0      | 0        | 0         | 0       | 0       | 0        | 0         | 0           | 0       | 0       | 0      | 0       |
| AMERICAN SAMOA       | 0     | 0       | 0     | 0        | 0       | 0            | 12     | 0        | 0      | 0        | 0         | 0       | 0       | 1        | 0         | 0           | 0       | 0       | 0      | 1       |

### May 2023 Totals by Location Moved From, and By County Moved To

| FROM / TO                | LEWIS | LINCOLN | MASON | OKANAGON | PACIFIC | PEND | OREILLE | PIERCE | SAN | JUAN | SKAGIT | SKAMANIA | SNOHOMISH | SPOKANE | STEVENS | THURSTON | WAHIAKIUM | WALLA | WALLA | WHATCOM | WHITMAN | YAKIMA | UNKNOWN |
|--------------------------|-------|---------|-------|----------|---------|------|---------|--------|-----|------|--------|----------|-----------|---------|---------|----------|-----------|-------|-------|---------|---------|--------|---------|
| ANDORRA                  | 0     | 0       | 0     | 0        | 0       | 0    | 0       | 0      | 0   | 0    | 0      | 0        | 0         | 0       | 0       | 0        | 0         | 0     | 0     | 0       | 0       | 0      | 0       |
| ANGOLA                   | 0     | 0       | 0     | 0        | 0       | 0    | 0       | 4      | 0   | 0    | 0      | 0        | 1         | 0       | 0       | 0        | 0         | 0     | 0     | 0       | 0       | 0      | 0       |
| ANGUILLA                 | 0     | 0       | 0     | 0        | 0       | 0    | 0       | 0      | 0   | 0    | 0      | 0        | 0         | 0       | 0       | 0        | 0         | 0     | 0     | 0       | 0       | 0      | 0       |
| ANTARCTICA               | 0     | 0       | 0     | 0        | 0       | 0    | 0       | 0      | 0   | 0    | 0      | 0        | 0         | 0       | 0       | 0        | 0         | 0     | 0     | 0       | 0       | 0      | 0       |
| ANTIGUA-BARBUDA          | 0     | 0       | 0     | 0        | 0       | 0    | 0       | 0      | 0   | 0    | 0      | 0        | 0         | 0       | 0       | 0        | 0         | 0     | 0     | 0       | 0       | 0      | 0       |
| ARGENTINA                | 0     | 0       | 0     | 0        | 0       | 0    | 0       | 0      | 0   | 0    | 0      | 0        | 0         | 0       | 0       | 0        | 0         | 0     | 0     | 1       | 0       | 0      | 0       |
| ARMENIA                  | 0     | 0       | 0     | 0        | 0       | 0    | 0       | 0      | 0   | 0    | 0      | 0        | 0         | 0       | 0       | 0        | 0         | 0     | 0     | 0       | 0       | 0      | 0       |
| ARUBA                    | 0     | 0       | 0     | 0        | 0       | 0    | 0       | 0      | 0   | 0    | 0      | 0        | 0         | 0       | 0       | 0        | 0         | 0     | 0     | 0       | 0       | 0      | 0       |
| AUSTRALIA                | 0     | 0       | 0     | 0        | 0       | 0    | 0       | 0      | 0   | 0    | 0      | 0        | 1         | 0       | 0       | 0        | 0         | 0     | 0     | 0       | 0       | 0      | 0       |
| AUSTRIA                  | 0     | 0       | 0     | 0        | 0       | 0    | 0       | 0      | 0   | 0    | 0      | 0        | 0         | 0       | 0       | 0        | 0         | 0     | 0     | 0       | 0       | 0      | 0       |
| AZERBAIJAN               | 0     | 0       | 0     | 0        | 0       | 0    | 0       | 0      | 0   | 0    | 0      | 0        | 0         | 0       | 0       | 0        | 0         | 0     | 0     | 0       | 0       | 0      | 0       |
| BAHAMAS                  | 0     | 0       | 0     | 0        | 0       | 0    | 0       | 0      | 0   | 0    | 0      | 0        | 0         | 0       | 0       | 0        | 0         | 0     | 0     | 0       | 0       | 0      | 0       |
| BAHRAIN                  | 0     | 0       | 0     | 0        | 0       | 0    | 0       | 0      | 0   | 0    | 0      | 0        | 0         | 0       | 0       | 0        | 0         | 0     | 0     | 0       | 0       | 0      | 0       |
| BANGLADESH               | 0     | 0       | 0     | 0        | 0       | 0    | 0       | 0      | 0   | 0    | 0      | 0        | 0         | 0       | 0       | 0        | 0         | 0     | 0     | 0       | 0       | 0      | 0       |
| BARBADOS                 | 0     | 0       | 0     | 0        | 0       | 0    | 0       | 0      | 0   | 0    | 0      | 0        | 0         | 0       | 0       | 0        | 0         | 0     | 0     | 0       | 0       | 0      | 0       |
| BELARUS                  | 0     | 0       | 0     | 0        | 0       | 0    | 0       | 4      | 0   | 0    | 0      | 0        | 2         | 0       | 0       | 0        | 0         | 0     | 0     | 0       | 0       | 0      | 2       |
| BELGIUM                  | 0     | 0       | 0     | 0        | 0       | 0    | 0       | 0      | 0   | 0    | 0      | 0        | 0         | 0       | 0       | 0        | 0         | 0     | 0     | 0       | 0       | 0      | 0       |
| BELIZE                   | 0     | 0       | 0     | 0        | 0       | 0    | 0       | 0      | 0   | 0    | 0      | 0        | 0         | 0       | 0       | 0        | 0         | 0     | 0     | 0       | 0       | 0      | 0       |
| BENIN                    | 0     | 0       | 0     | 0        | 0       | 0    | 0       | 0      | 0   | 0    | 0      | 0        | 0         | 0       | 0       | 0        | 0         | 0     | 0     | 0       | 0       | 0      | 0       |
| BERMUDA                  | 0     | 0       | 0     | 0        | 0       | 0    | 0       | 0      | 0   | 0    | 0      | 0        | 0         | 0       | 0       | 0        | 0         | 0     | 0     | 0       | 0       | 0      | 0       |
| BHUTAN                   | 0     | 0       | 0     | 0        | 0       | 0    | 0       | 0      | 0   | 0    | 0      | 0        | 0         | 0       | 0       | 0        | 0         | 0     | 0     | 0       | 0       | 0      | 0       |
| BOLIVIA                  | 0     | 0       | 0     | 0        | 0       | 0    | 0       | 0      | 0   | 0    | 0      | 0        | 0         | 0       | 0       | 0        | 0         | 0     | 0     | 0       | 0       | 0      | 0       |
| BONAIRE, SINT EUSTATIUS  | 0     | 0       | 0     | 0        | 0       | 0    | 0       | 0      | 0   | 0    | 0      | 0        | 0         | 0       | 0       | 0        | 0         | 0     | 0     | 0       | 0       | 0      | 0       |
| BOSNIA AND HERZEGOVINA   | 0     | 0       | 0     | 0        | 0       | 0    | 0       | 0      | 0   | 0    | 0      | 0        | 0         | 0       | 0       | 0        | 0         | 0     | 0     | 0       | 0       | 0      | 0       |
| BOTSWANA                 | 0     | 0       | 0     | 0        | 0       | 0    | 0       | 0      | 0   | 0    | 0      | 0        | 0         | 0       | 0       | 0        | 0         | 0     | 0     | 0       | 0       | 0      | 0       |
| BOUVET ISLAND            | 0     | 0       | 0     | 0        | 0       | 0    | 0       | 0      | 0   | 0    | 0      | 0        | 0         | 0       | 0       | 0        | 0         | 0     | 0     | 0       | 0       | 0      | 0       |
| BRAZIL                   | 0     | 0       | 0     | 0        | 0       | 0    | 0       | 1      | 0   | 0    | 0      | 0        | 7         | 0       | 0       | 0        | 0         | 0     | 0     | 0       | 0       | 1      | 0       |
| BRITISH INDIAN OCEAN TEF | 0     | 0       | 0     | 0        | 0       | 0    | 0       | 0      | 0   | 0    | 0      | 0        | 0         | 0       | 0       | 0        | 0         | 0     | 0     | 0       | 0       | 0      | 0       |
| BRUNEI DARUSSALAM        | 0     | 0       | 0     | 0        | 0       | 0    | 0       | 0      | 0   | 0    | 0      | 0        | 0         | 0       | 0       | 0        | 0         | 0     | 0     | 0       | 0       | 0      | 0       |
| BULGARIA                 | 0     | 0       | 0     | 0        | 0       | 0    | 0       | 0      | 0   | 0    | 0      | 0        | 0         | 0       | 0       | 0        | 0         | 0     | 0     | 0       | 0       | 0      | 0       |
| BURKINA FASO             | 0     | 0       | 0     | 0        | 0       | 0    | 0       | 0      | 0   | 0    | 0      | 0        | 0         | 0       | 0       | 0        | 0         | 0     | 0     | 0       | 0       | 0      | 0       |
| BURUNDI                  | 0     | 0       | 0     | 0        | 0       | 0    | 0       | 0      | 0   | 0    | 0      | 0        | 0         | 0       | 0       | 0        | 0         | 0     | 0     | 0       | 0       | 0      | 0       |
| CAMBODIA                 | 0     | 0       | 0     | 0        | 0       | 0    | 0       | 0      | 0   | 0    | 0      | 0        | 1         | 1       | 0       | 0        | 0         | 0     | 0     | 0       | 0       | 0      | 0       |
| CAMEROON                 | 0     | 0       | 0     | 0        | 0       | 0    | 0       | 0      | 0   | 0    | 0      | 0        | 0         | 0       | 0       | 0        | 0         | 0     | 0     | 0       | 0       | 0      | 0       |
| CANADA                   | 0     | 0       | 0     | 1        | 0       | 0    | 0       | 4      | 0   | 3    | 0      | 0        | 16        | 5       | 0       | 0        | 0         | 0     | 10    | 0       | 0       | 0      | 5       |
| CAPE VERDE               | 0     | 0       | 0     | 0        | 0       | 0    | 0       | 0      | 0   | 0    | 0      | 0        | 0         | 0       | 0       | 0        | 0         | 0     | 0     | 0       | 0       | 0      | 0       |
| CAYMAN ISLANDS           | 0     | 0       | 0     | 0        | 0       | 0    | 0       | 0      | 0   | 0    | 0      | 0        | 0         | 0       | 0       | 0        | 0         | 0     | 0     | 0       | 0       | 0      | 0       |
| CENTRAL AFRICAN REPUBLI  | 0     | 0       | 0     | 0        | 0       | 0    | 0       | 0      | 0   | 0    | 0      | 0        | 0         | 0       | 0       | 0        | 0         | 0     | 0     | 0       | 0       | 0      | 0       |
| CHAD                     | 0     | 0       | 0     | 0        | 0       | 0    | 0       | 0      | 0   | 0    | 0      | 0        | 0         | 0       | 0       | 0        | 0         | 0     | 0     | 0       | 0       | 0      | 0       |
| CHILE                    | 0     | 0       | 0     | 0        | 0       | 0    | 0       | 1      | 0   | 0    | 0      | 0        | 1         | 0       | 0       | 0        | 0         | 0     | 0     | 0       | 0       | 0      | 0       |
| CHINA                    | 0     | 0       | 0     | 0        | 0       | 0    | 0       | 2      | 0   | 0    | 0      | 0        | 9         | 1       | 0       | 0        | 0         | 0     | 1     | 0       | 0       | 0      | 3       |
| CHRISTMAS ISLAND         | 0     | 0       | 0     | 0        | 0       | 0    | 0       | 0      | 0   | 0    | 0      | 0        | 0         | 0       | 0       | 0        | 0         | 0     | 0     | 0       | 0       | 0      | 0       |
| COCOS (KEELING) ISLANDS  | 0     | 0       | 0     | 0        | 0       | 0    | 0       | 0      | 0   | 0    | 0      | 0        | 0         | 0       | 0       | 0        | 0         | 0     | 0     | 0       | 0       | 0      | 0       |
| COLOMBIA                 | 0     | 0       | 0     | 0        | 0       | 0    | 0       | 9      | 0   | 1    | 0      | 0        | 23        | 2       | 0       | 2        | 0         | 0     | 4     | 0       | 3       | 2      | 2       |
| COMOROS                  | 0     | 0       | 0     | 0        | 0       | 0    | 0       | 0      | 0   | 0    | 0      | 0        | 0         | 0       | 0       | 0        | 0         | 0     | 0     | 0       | 0       | 0      | 0       |
| CONGO                    | 0     | 0       | 0     | 0        | 0       | 0    | 0       | 0      | 0   | 0    | 0      | 0        | 0         | 0       | 0       | 0        | 0         | 0     | 0     | 0       | 0       | 0      | 0       |
| CONGO, THE DEMOCRATIC I  | 0     | 0       | 0     | 0        | 0       | 0    | 0       | 1      | 0   | 0    | 0      | 0        | 0         | 0       | 0       | 0        | 0         | 0     | 0     | 0       | 0       | 0      | 0       |
| COOK ISLANDS             | 0     | 0       | 0     | 0        | 0       | 0    | 0       | 0      | 0   | 0    | 0      | 0        | 0         | 0       | 0       | 0        | 0         | 0     | 0     | 0       | 0       | 0      | 0       |
| COSTA RICA               | 0     | 0       | 0     | 0        | 0       | 0    | 0       | 1      | 0   | 0    | 0      | 0        | 1         | 0       | 0       | 0        | 0         | 0     | 0     | 0       | 0       | 0      | 0       |
| CÔTE D'IVOIRE            | 0     | 0       | 0     | 0        | 0       | 0    | 0       | 0      | 0   | 0    | 0      | 0        | 0         | 0       | 0       | 0        | 0         | 0     | 0     | 0       | 0       | 0      | 0       |
| CROATIA                  | 0     | 0       | 0     | 0        | 0       | 0    | 0       | 0      | 0   | 0    | 0      | 0        | 1         | 0       | 0       | 0        | 0         | 0     | 0     | 0       | 0       | 0      | 0       |
| CUBA                     | 0     | 0       | 0     | 0        | 0       | 0    | 0       | 0      | 0   | 0    | 0      | 0        | 0         | 0       | 0       | 0        | 0         | 0     | 0     | 0       | 0       | 0      | 0       |
| CURAÇAO                  | 0     | 0       | 0     | 0        | 0       | 0    | 0       | 0      | 0   | 0    | 0      | 0        | 0         | 0       | 0       | 0        | 0         | 0     | 0     | 0       | 0       | 0      | 0       |
| CYPRUS                   | 0     | 0       | 0     | 0        | 0       | 0    | 0       | 0      | 0   | 0    | 0      | 0        | 0         | 0       | 0       | 0        | 0         | 0     | 0     | 0       | 0       | 0      | 0       |
| CZECH REPUBLIC           | 0     | 0       | 0     | 0        | 0       | 0    | 0       | 0      | 0   | 0    | 0      | 0        | 0         | 0       | 0       | 0        | 0         | 0     | 0     | 0       | 0       | 0      | 0       |
| DENMARK                  | 0     | 0       | 0     | 0        | 0       | 0    | 0       | 0      | 0   | 0    | 0      | 0        | 0         | 0       | 0       | 0        | 0         | 0     | 0     | 0       | 0       | 0      | 0       |
| DJIBOUTI                 | 0     | 0       | 0     | 0        | 0       | 0    | 0       | 0      | 0   | 0    | 0      | 0        | 0         | 0       | 0       | 0        | 0         | 0     | 0     | 0       | 0       | 0      | 0       |
| DOMINICA                 | 0     | 0       | 0     | 0        | 0       | 0    | 0       | 0      | 0   | 0    | 0      | 0        | 0         | 0       | 0       | 0        | 0         | 0     | 0     | 0       | 0       | 0      | 0       |

May 2023 Totals by Location Moved From, and By County Moved To

| FROM / TO                | LEWIS | LINCOLN | MASON | OKANAGON | PACIFIC | PEND<br>OREILLE | PIERCE | SAN<br>JUAN | SKAGIT | SKAMANIA | SNOHOMISH | SPOKANE | STEVENS | THURSTON | WAHAKIAKUM | WALLA<br>WALLA | WHATCOM | WHITMAN | YAKIMA | UNKNOWN |
|--------------------------|-------|---------|-------|----------|---------|-----------------|--------|-------------|--------|----------|-----------|---------|---------|----------|------------|----------------|---------|---------|--------|---------|
| DOMINICAN REPUBLIC       | 0     | 0       | 0     | 0        | 0       | 0               | 1      | 0           | 0      | 0        | 0         | 0       | 0       | 0        | 0          | 0              | 0       | 0       | 0      | 0       |
| ECUADOR                  | 0     | 0       | 0     | 0        | 0       | 0               | 2      | 0           | 1      | 0        | 1         | 0       | 0       | 0        | 0          | 0              | 0       | 0       | 0      | 0       |
| EGYPT                    | 0     | 0       | 0     | 0        | 0       | 0               | 0      | 0           | 0      | 0        | 1         | 1       | 0       | 0        | 0          | 0              | 0       | 0       | 0      | 0       |
| EL SALVADOR              | 0     | 0       | 0     | 0        | 0       | 0               | 1      | 0           | 0      | 0        | 5         | 0       | 0       | 0        | 0          | 0              | 0       | 0       | 0      | 0       |
| ENGLAND                  | 0     | 0       | 0     | 0        | 0       | 0               | 0      | 0           | 0      | 0        | 2         | 0       | 0       | 0        | 0          | 0              | 0       | 0       | 0      | 0       |
| EQUATORIAL GUINEA        | 0     | 0       | 0     | 0        | 0       | 0               | 0      | 0           | 0      | 0        | 0         | 0       | 0       | 0        | 0          | 0              | 0       | 0       | 0      | 0       |
| ERITREA                  | 0     | 0       | 0     | 0        | 0       | 0               | 0      | 0           | 0      | 0        | 3         | 0       | 0       | 0        | 0          | 0              | 0       | 0       | 0      | 6       |
| ESTONIA                  | 0     | 0       | 0     | 0        | 0       | 0               | 0      | 0           | 0      | 0        | 0         | 0       | 0       | 0        | 0          | 0              | 0       | 0       | 0      | 0       |
| ETHIOPIA                 | 0     | 0       | 0     | 0        | 0       | 0               | 0      | 0           | 0      | 0        | 3         | 0       | 0       | 0        | 0          | 0              | 0       | 0       | 0      | 0       |
| FALKLAND ISLANDS (MALVI  | 0     | 0       | 0     | 0        | 0       | 0               | 0      | 0           | 0      | 0        | 0         | 0       | 0       | 0        | 0          | 0              | 0       | 0       | 0      | 0       |
| FAROE ISLANDS            | 0     | 0       | 0     | 0        | 0       | 0               | 0      | 0           | 0      | 0        | 0         | 0       | 0       | 0        | 0          | 0              | 0       | 0       | 0      | 0       |
| FEDERATED STATES OF MI   | 0     | 0       | 0     | 0        | 0       | 0               | 0      | 0           | 0      | 0        | 0         | 0       | 0       | 0        | 0          | 0              | 0       | 0       | 0      | 0       |
| FIJI                     | 0     | 0       | 0     | 0        | 0       | 0               | 0      | 0           | 0      | 0        | 1         | 0       | 0       | 0        | 0          | 0              | 1       | 0       | 0      | 0       |
| FINLAND                  | 0     | 0       | 0     | 0        | 0       | 0               | 0      | 0           | 0      | 0        | 0         | 0       | 0       | 0        | 0          | 0              | 0       | 0       | 0      | 0       |
| FRANCE                   | 0     | 0       | 0     | 0        | 0       | 0               | 0      | 0           | 0      | 0        | 1         | 0       | 0       | 0        | 0          | 0              | 1       | 0       | 0      | 0       |
| FRENCH GUIANA            | 0     | 0       | 0     | 0        | 0       | 0               | 0      | 0           | 0      | 0        | 0         | 0       | 0       | 0        | 0          | 0              | 0       | 0       | 0      | 0       |
| FRENCH POLYNESIA         | 0     | 0       | 0     | 0        | 0       | 0               | 0      | 0           | 0      | 0        | 0         | 0       | 0       | 0        | 0          | 0              | 0       | 0       | 0      | 0       |
| FRENCH SOUTHERN TERRIT   | 0     | 0       | 0     | 0        | 0       | 0               | 0      | 0           | 0      | 0        | 0         | 0       | 0       | 0        | 0          | 0              | 0       | 0       | 0      | 0       |
| GABON                    | 0     | 0       | 0     | 0        | 0       | 0               | 0      | 0           | 0      | 0        | 0         | 0       | 0       | 0        | 0          | 0              | 0       | 0       | 0      | 0       |
| GAMBIA                   | 0     | 0       | 0     | 0        | 0       | 0               | 0      | 0           | 0      | 0        | 1         | 0       | 0       | 0        | 0          | 0              | 0       | 0       | 0      | 0       |
| GEORGIA (Country)        | 0     | 0       | 0     | 0        | 0       | 0               | 0      | 0           | 0      | 0        | 0         | 0       | 0       | 0        | 0          | 0              | 0       | 0       | 0      | 0       |
| GERMANY                  | 0     | 0       | 0     | 0        | 0       | 0               | 4      | 0           | 1      | 0        | 4         | 1       | 0       | 0        | 0          | 0              | 2       | 0       | 0      | 1       |
| GHANA                    | 0     | 0       | 0     | 0        | 0       | 0               | 0      | 0           | 0      | 0        | 0         | 0       | 0       | 0        | 0          | 0              | 0       | 0       | 0      | 0       |
| GIBRALTAR                | 0     | 0       | 0     | 0        | 0       | 0               | 0      | 0           | 0      | 0        | 0         | 0       | 0       | 0        | 0          | 0              | 0       | 0       | 0      | 0       |
| GREECE                   | 0     | 0       | 0     | 0        | 0       | 0               | 0      | 0           | 0      | 0        | 0         | 0       | 0       | 0        | 0          | 0              | 0       | 0       | 0      | 0       |
| GREENLAND                | 0     | 0       | 0     | 0        | 0       | 0               | 0      | 0           | 0      | 0        | 0         | 0       | 0       | 0        | 0          | 0              | 0       | 0       | 0      | 0       |
| GRENADA                  | 0     | 0       | 0     | 0        | 0       | 0               | 0      | 0           | 0      | 0        | 0         | 0       | 0       | 0        | 0          | 0              | 0       | 0       | 0      | 0       |
| GUADELOUPE               | 0     | 0       | 0     | 0        | 0       | 0               | 0      | 0           | 0      | 0        | 0         | 0       | 0       | 0        | 0          | 0              | 0       | 0       | 0      | 0       |
| GUAM                     | 0     | 0       | 0     | 0        | 0       | 0               | 9      | 0           | 0      | 0        | 2         | 1       | 0       | 1        | 0          | 0              | 0       | 0       | 0      | 5       |
| GUATEMALA                | 0     | 0       | 0     | 0        | 0       | 0               | 1      | 0           | 0      | 0        | 0         | 1       | 0       | 0        | 0          | 0              | 1       | 0       | 1      | 0       |
| GUERNSEY                 | 0     | 0       | 0     | 0        | 0       | 0               | 0      | 0           | 0      | 0        | 0         | 0       | 0       | 0        | 0          | 0              | 0       | 0       | 0      | 0       |
| GUINEA                   | 0     | 0       | 0     | 0        | 0       | 0               | 0      | 0           | 0      | 0        | 0         | 0       | 0       | 0        | 0          | 0              | 0       | 0       | 0      | 0       |
| GUINEA-BISSAU            | 0     | 0       | 0     | 0        | 0       | 0               | 0      | 0           | 0      | 0        | 0         | 0       | 0       | 0        | 0          | 0              | 0       | 0       | 0      | 0       |
| GUYANA                   | 0     | 0       | 0     | 0        | 0       | 0               | 0      | 0           | 0      | 0        | 0         | 0       | 0       | 0        | 0          | 0              | 0       | 0       | 0      | 0       |
| HAITI                    | 0     | 0       | 0     | 0        | 0       | 0               | 0      | 0           | 0      | 0        | 0         | 2       | 0       | 0        | 0          | 0              | 0       | 0       | 0      | 0       |
| HEARD ISLAND-MCDONALD    | 0     | 0       | 0     | 0        | 0       | 0               | 0      | 0           | 0      | 0        | 0         | 0       | 0       | 0        | 0          | 0              | 0       | 0       | 0      | 0       |
| HOLY SEE (VATICAN CITY S | 0     | 0       | 0     | 0        | 0       | 0               | 0      | 0           | 0      | 0        | 0         | 0       | 0       | 0        | 0          | 0              | 0       | 0       | 0      | 0       |
| HONDURAS                 | 0     | 0       | 1     | 0        | 0       | 0               | 0      | 0           | 0      | 0        | 1         | 2       | 0       | 0        | 0          | 0              | 0       | 0       | 0      | 1       |
| HONG KONG                | 0     | 0       | 0     | 0        | 0       | 0               | 0      | 0           | 0      | 0        | 0         | 0       | 0       | 0        | 0          | 0              | 0       | 0       | 0      | 0       |
| HUNGARY                  | 0     | 0       | 0     | 0        | 0       | 0               | 0      | 0           | 0      | 0        | 0         | 0       | 0       | 0        | 0          | 0              | 0       | 0       | 0      | 0       |
| ICELAND                  | 0     | 0       | 0     | 0        | 0       | 0               | 0      | 0           | 0      | 0        | 0         | 0       | 0       | 0        | 0          | 0              | 0       | 0       | 0      | 0       |
| INDIA                    | 0     | 0       | 0     | 0        | 0       | 0               | 11     | 0           | 0      | 0        | 10        | 2       | 1       | 0        | 0          | 0              | 2       | 0       | 0      | 3       |
| INDONESIA                | 0     | 0       | 0     | 0        | 0       | 0               | 0      | 0           | 0      | 0        | 1         | 0       | 0       | 1        | 0          | 0              | 0       | 0       | 0      | 0       |
| IRAN                     | 0     | 0       | 0     | 0        | 0       | 0               | 0      | 0           | 0      | 0        | 0         | 0       | 0       | 0        | 0          | 0              | 0       | 0       | 0      | 0       |
| IRAQ                     | 0     | 0       | 0     | 0        | 0       | 0               | 0      | 0           | 0      | 0        | 0         | 0       | 0       | 0        | 0          | 0              | 0       | 0       | 0      | 0       |
| IRELAND                  | 0     | 0       | 0     | 0        | 0       | 0               | 0      | 0           | 0      | 0        | 0         | 0       | 0       | 0        | 0          | 0              | 0       | 0       | 0      | 1       |
| ISLE OF MAN              | 0     | 0       | 0     | 0        | 0       | 0               | 0      | 0           | 0      | 0        | 0         | 0       | 0       | 0        | 0          | 0              | 0       | 0       | 0      | 0       |
| ISRAEL                   | 0     | 0       | 0     | 0        | 0       | 0               | 0      | 0           | 0      | 0        | 0         | 0       | 0       | 0        | 0          | 0              | 0       | 0       | 0      | 0       |
| ITALY                    | 0     | 0       | 0     | 0        | 0       | 0               | 3      | 0           | 0      | 0        | 1         | 0       | 0       | 0        | 0          | 0              | 0       | 0       | 0      | 0       |
| JAMAICA                  | 0     | 0       | 0     | 0        | 0       | 0               | 1      | 0           | 0      | 0        | 3         | 0       | 0       | 1        | 0          | 0              | 0       | 0       | 0      | 0       |
| JAPAN                    | 0     | 0       | 0     | 0        | 0       | 0               | 3      | 0           | 0      | 0        | 5         | 1       | 0       | 0        | 0          | 0              | 0       | 2       | 0      | 1       |
| JERSEY                   | 0     | 0       | 0     | 0        | 0       | 0               | 0      | 0           | 0      | 0        | 0         | 0       | 0       | 0        | 0          | 0              | 0       | 0       | 0      | 0       |
| JORDAN                   | 0     | 0       | 0     | 0        | 0       | 0               | 0      | 0           | 0      | 0        | 0         | 0       | 0       | 0        | 0          | 0              | 0       | 0       | 0      | 0       |
| KAZAKHSTAN               | 0     | 0       | 0     | 0        | 0       | 0               | 0      | 0           | 0      | 0        | 5         | 2       | 0       | 0        | 0          | 0              | 0       | 0       | 0      | 0       |
| KENYA                    | 0     | 0       | 0     | 0        | 0       | 0               | 3      | 0           | 0      | 0        | 4         | 1       | 0       | 0        | 0          | 0              | 0       | 0       | 0      | 1       |
| KIRIBATI                 | 0     | 0       | 0     | 0        | 0       | 0               | 0      | 0           | 0      | 0        | 0         | 0       | 0       | 0        | 0          | 0              | 0       | 0       | 0      | 0       |
| KUWAIT                   | 0     | 0       | 0     | 0        | 0       | 0               | 0      | 0           | 0      | 0        | 0         | 0       | 0       | 0        | 0          | 0              | 0       | 0       | 0      | 0       |
| KYRGYZSTAN               | 0     | 0       | 0     | 0        | 0       | 0               | 5      | 0           | 0      | 0        | 14        | 0       | 0       | 0        | 0          | 0              | 0       | 0       | 0      | 7       |

May 2023 Totals by Location Moved From, and By County Moved To

| FROM / TO               | LEWIS | LINCOLN | MASON | OKANAGON | PACIFIC | PEND | OREILLE | PIERCE | SAN | JUAN | SKAGIT | SKAMANIA | SNOHOMISH | SPOKANE | STEVENS | THURSTON | WAHAKIAKUM | WALLA | WALLA | WHATCOM | WHITMAN | YAKIMA | UNKNOWN |   |
|-------------------------|-------|---------|-------|----------|---------|------|---------|--------|-----|------|--------|----------|-----------|---------|---------|----------|------------|-------|-------|---------|---------|--------|---------|---|
| LAOS                    | 0     | 0       | 0     | 0        | 0       | 0    | 0       | 0      | 0   | 0    | 0      | 0        | 0         | 0       | 0       | 0        | 0          | 0     | 0     | 0       | 0       | 0      | 0       |   |
| LATVIA                  | 0     | 0       | 0     | 0        | 0       | 0    | 0       | 0      | 0   | 0    | 0      | 0        | 1         | 0       | 0       | 0        | 0          | 0     | 0     | 0       | 0       | 0      | 0       | 0 |
| LEBANON                 | 0     | 0       | 0     | 0        | 0       | 0    | 0       | 0      | 0   | 0    | 0      | 0        | 0         | 0       | 0       | 0        | 0          | 0     | 0     | 0       | 0       | 0      | 0       | 0 |
| LESOTHO                 | 0     | 0       | 0     | 0        | 0       | 0    | 0       | 0      | 0   | 0    | 0      | 0        | 0         | 0       | 0       | 0        | 0          | 0     | 0     | 0       | 0       | 0      | 0       | 0 |
| LIBERIA                 | 0     | 0       | 0     | 0        | 0       | 0    | 0       | 0      | 0   | 0    | 0      | 0        | 0         | 0       | 0       | 0        | 0          | 0     | 0     | 0       | 0       | 0      | 0       | 0 |
| LIBYA                   | 0     | 0       | 0     | 0        | 0       | 0    | 0       | 0      | 0   | 0    | 0      | 0        | 0         | 0       | 0       | 0        | 0          | 0     | 0     | 0       | 0       | 0      | 0       | 0 |
| LIECHTENSTEIN           | 0     | 0       | 0     | 0        | 0       | 0    | 0       | 0      | 0   | 0    | 0      | 0        | 0         | 0       | 0       | 0        | 0          | 0     | 0     | 0       | 0       | 0      | 0       | 0 |
| LITHUANIA               | 0     | 0       | 0     | 0        | 0       | 0    | 0       | 3      | 0   | 0    | 0      | 0        | 0         | 0       | 0       | 0        | 0          | 0     | 0     | 0       | 0       | 0      | 0       | 0 |
| LUXEMBOURG              | 0     | 0       | 0     | 0        | 0       | 0    | 0       | 0      | 0   | 0    | 0      | 0        | 0         | 0       | 0       | 0        | 0          | 0     | 0     | 0       | 0       | 0      | 0       | 0 |
| MACAU                   | 0     | 0       | 0     | 0        | 0       | 0    | 0       | 0      | 0   | 0    | 0      | 0        | 0         | 0       | 0       | 0        | 0          | 0     | 0     | 0       | 0       | 0      | 0       | 0 |
| MACEDONIA               | 0     | 0       | 0     | 0        | 0       | 0    | 0       | 0      | 0   | 0    | 0      | 0        | 0         | 0       | 0       | 0        | 0          | 0     | 0     | 0       | 0       | 0      | 0       | 0 |
| MADAGASCAR              | 0     | 0       | 0     | 0        | 0       | 0    | 0       | 0      | 0   | 0    | 0      | 0        | 0         | 0       | 0       | 0        | 0          | 0     | 0     | 0       | 0       | 0      | 0       | 0 |
| MALAWI                  | 0     | 0       | 0     | 0        | 0       | 0    | 0       | 0      | 0   | 0    | 0      | 0        | 6         | 0       | 0       | 0        | 0          | 0     | 0     | 0       | 0       | 0      | 0       | 0 |
| MALAYSIA                | 0     | 0       | 0     | 0        | 0       | 0    | 0       | 0      | 0   | 0    | 0      | 0        | 0         | 0       | 0       | 0        | 0          | 0     | 0     | 0       | 0       | 0      | 0       | 0 |
| MALDIVES                | 0     | 0       | 0     | 0        | 0       | 0    | 0       | 0      | 0   | 0    | 0      | 0        | 0         | 0       | 0       | 0        | 0          | 0     | 0     | 0       | 0       | 0      | 0       | 0 |
| MALI                    | 0     | 0       | 0     | 0        | 0       | 0    | 0       | 0      | 0   | 0    | 0      | 0        | 0         | 0       | 0       | 0        | 0          | 0     | 0     | 0       | 0       | 0      | 0       | 0 |
| MALTA                   | 0     | 0       | 0     | 0        | 0       | 0    | 0       | 0      | 0   | 0    | 0      | 0        | 0         | 0       | 0       | 0        | 0          | 0     | 0     | 0       | 0       | 0      | 0       | 0 |
| MARSHALL ISLANDS        | 0     | 0       | 0     | 0        | 0       | 0    | 0       | 0      | 0   | 0    | 0      | 0        | 1         | 1       | 0       | 0        | 0          | 0     | 0     | 0       | 0       | 0      | 0       | 0 |
| MARTINIQUE              | 0     | 0       | 0     | 0        | 0       | 0    | 0       | 0      | 0   | 0    | 0      | 0        | 0         | 0       | 0       | 0        | 0          | 0     | 0     | 0       | 0       | 0      | 0       | 0 |
| MAURITANIA              | 0     | 0       | 0     | 0        | 0       | 0    | 0       | 0      | 0   | 0    | 0      | 0        | 1         | 0       | 0       | 0        | 0          | 0     | 0     | 0       | 0       | 0      | 0       | 0 |
| MAURITIUS               | 0     | 0       | 0     | 0        | 0       | 0    | 0       | 0      | 0   | 0    | 0      | 0        | 0         | 0       | 0       | 0        | 0          | 0     | 0     | 0       | 0       | 0      | 0       | 0 |
| MAYOTTE ISLAND          | 0     | 0       | 0     | 0        | 0       | 0    | 0       | 0      | 0   | 0    | 0      | 0        | 0         | 0       | 0       | 0        | 0          | 0     | 0     | 0       | 0       | 0      | 0       | 0 |
| MEXICO                  | 1     | 0       | 3     | 2        | 0       | 0    | 0       | 19     | 1   | 5    | 0      | 0        | 15        | 10      | 1       | 3        | 0          | 0     | 0     | 2       | 0       | 15     | 5       | 0 |
| MONACO                  | 0     | 0       | 0     | 0        | 0       | 0    | 0       | 0      | 0   | 0    | 0      | 0        | 0         | 0       | 0       | 0        | 0          | 0     | 0     | 0       | 0       | 0      | 0       | 0 |
| MONGOLIA                | 0     | 0       | 0     | 0        | 0       | 0    | 0       | 0      | 0   | 0    | 0      | 0        | 0         | 0       | 0       | 0        | 0          | 0     | 0     | 0       | 0       | 0      | 0       | 0 |
| MONTENEGRO              | 0     | 0       | 0     | 0        | 0       | 0    | 0       | 0      | 0   | 0    | 0      | 0        | 2         | 0       | 0       | 0        | 0          | 0     | 0     | 0       | 0       | 0      | 0       | 0 |
| MONTSERRAT              | 0     | 0       | 0     | 0        | 0       | 0    | 0       | 0      | 0   | 0    | 0      | 0        | 0         | 0       | 0       | 0        | 0          | 0     | 0     | 0       | 0       | 0      | 0       | 0 |
| MOROCCO                 | 0     | 0       | 0     | 0        | 0       | 0    | 0       | 0      | 0   | 0    | 0      | 0        | 1         | 0       | 0       | 0        | 0          | 0     | 0     | 0       | 0       | 0      | 0       | 0 |
| MOZAMBIQUE              | 0     | 0       | 0     | 0        | 0       | 0    | 0       | 0      | 0   | 0    | 0      | 0        | 0         | 0       | 0       | 0        | 0          | 0     | 0     | 0       | 0       | 0      | 0       | 0 |
| MYANMAR                 | 0     | 0       | 0     | 0        | 0       | 0    | 0       | 0      | 0   | 0    | 0      | 0        | 1         | 0       | 0       | 0        | 0          | 0     | 0     | 0       | 0       | 0      | 0       | 0 |
| NAMIBIA                 | 0     | 0       | 0     | 0        | 0       | 0    | 0       | 0      | 0   | 0    | 0      | 0        | 0         | 0       | 0       | 0        | 0          | 0     | 0     | 0       | 0       | 0      | 0       | 0 |
| NAURU                   | 0     | 0       | 0     | 0        | 0       | 0    | 0       | 0      | 0   | 0    | 0      | 0        | 0         | 0       | 0       | 0        | 0          | 0     | 0     | 0       | 0       | 0      | 0       | 0 |
| NEPAL                   | 0     | 0       | 0     | 0        | 0       | 0    | 0       | 0      | 0   | 0    | 0      | 0        | 1         | 0       | 0       | 0        | 0          | 0     | 0     | 0       | 0       | 0      | 0       | 0 |
| NETHERLANDS             | 0     | 0       | 0     | 0        | 0       | 0    | 0       | 0      | 0   | 0    | 0      | 0        | 1         | 0       | 0       | 0        | 0          | 0     | 0     | 0       | 0       | 0      | 0       | 0 |
| NEW CALEDONIA           | 0     | 0       | 0     | 0        | 0       | 0    | 0       | 0      | 0   | 0    | 0      | 0        | 0         | 0       | 0       | 0        | 0          | 0     | 0     | 0       | 0       | 0      | 0       | 0 |
| NEW ZEALAND             | 0     | 0       | 0     | 0        | 0       | 0    | 0       | 0      | 0   | 0    | 0      | 0        | 0         | 1       | 0       | 0        | 0          | 0     | 0     | 0       | 0       | 0      | 0       | 0 |
| NICARAGUA               | 0     | 0       | 0     | 0        | 0       | 0    | 0       | 5      | 0   | 0    | 0      | 0        | 12        | 2       | 0       | 1        | 0          | 0     | 1     | 0       | 0       | 0      | 1       | 0 |
| NIGER                   | 0     | 0       | 0     | 0        | 0       | 0    | 0       | 0      | 0   | 0    | 0      | 0        | 0         | 0       | 0       | 0        | 0          | 0     | 0     | 0       | 0       | 0      | 0       | 0 |
| NIGERIA                 | 0     | 0       | 0     | 0        | 0       | 0    | 0       | 2      | 0   | 0    | 0      | 0        | 0         | 0       | 0       | 0        | 0          | 0     | 0     | 0       | 0       | 0      | 0       | 0 |
| NIUE                    | 0     | 0       | 0     | 0        | 0       | 0    | 0       | 0      | 0   | 0    | 0      | 0        | 0         | 0       | 0       | 0        | 0          | 0     | 0     | 0       | 0       | 0      | 0       | 0 |
| NORFOLK ISLAND          | 0     | 0       | 0     | 0        | 0       | 0    | 0       | 0      | 0   | 0    | 0      | 0        | 0         | 0       | 0       | 0        | 0          | 0     | 0     | 0       | 0       | 0      | 0       | 0 |
| NORTH KOREA             | 0     | 0       | 0     | 0        | 0       | 0    | 0       | 0      | 0   | 0    | 0      | 0        | 0         | 0       | 0       | 0        | 0          | 0     | 0     | 0       | 0       | 0      | 0       | 0 |
| NORTHERN IRELAND        | 0     | 0       | 0     | 0        | 0       | 0    | 0       | 0      | 0   | 0    | 0      | 0        | 0         | 0       | 0       | 0        | 0          | 0     | 0     | 0       | 0       | 0      | 0       | 0 |
| NORTHERN MARIANA ISLAN  | 0     | 0       | 0     | 0        | 0       | 0    | 0       | 4      | 0   | 0    | 0      | 0        | 0         | 1       | 0       | 0        | 0          | 0     | 0     | 1       | 0       | 0      | 0       | 0 |
| NORWAY                  | 0     | 0       | 0     | 0        | 0       | 0    | 0       | 0      | 0   | 0    | 0      | 0        | 0         | 0       | 0       | 0        | 0          | 0     | 0     | 0       | 0       | 0      | 0       | 0 |
| OCCUPIED PALESTINIAN TE | 0     | 0       | 0     | 0        | 0       | 0    | 0       | 0      | 0   | 0    | 0      | 0        | 0         | 0       | 0       | 0        | 0          | 0     | 0     | 0       | 0       | 0      | 0       | 0 |
| OMAN                    | 0     | 0       | 0     | 0        | 0       | 0    | 0       | 0      | 0   | 0    | 0      | 0        | 0         | 0       | 0       | 0        | 0          | 0     | 0     | 0       | 0       | 0      | 0       | 0 |
| PAKISTAN                | 0     | 0       | 0     | 0        | 0       | 0    | 0       | 1      | 0   | 0    | 0      | 0        | 1         | 0       | 0       | 0        | 0          | 0     | 0     | 0       | 0       | 0      | 0       | 0 |
| PALAU                   | 0     | 0       | 0     | 0        | 0       | 0    | 0       | 0      | 0   | 0    | 0      | 0        | 0         | 0       | 0       | 0        | 0          | 0     | 0     | 0       | 0       | 0      | 0       | 0 |
| PANAMA                  | 0     | 0       | 0     | 0        | 0       | 0    | 0       | 0      | 0   | 0    | 0      | 0        | 0         | 0       | 0       | 0        | 0          | 0     | 0     | 0       | 0       | 0      | 0       | 0 |
| PAPUA NEW GUINEA        | 0     | 0       | 0     | 0        | 0       | 0    | 0       | 0      | 0   | 0    | 0      | 0        | 0         | 0       | 0       | 0        | 0          | 0     | 0     | 0       | 0       | 0      | 0       | 0 |
| PARAGUAY                | 0     | 0       | 0     | 0        | 0       | 0    | 0       | 0      | 0   | 0    | 0      | 0        | 0         | 0       | 0       | 0        | 0          | 0     | 0     | 0       | 0       | 0      | 0       | 0 |
| PERU                    | 0     | 0       | 0     | 0        | 0       | 0    | 0       | 2      | 0   | 0    | 0      | 0        | 8         | 1       | 0       | 2        | 0          | 0     | 1     | 1       | 1       | 3      | 0       | 0 |
| PHILIPPINES             | 0     | 0       | 0     | 0        | 0       | 0    | 0       | 2      | 0   | 0    | 0      | 0        | 2         | 0       | 0       | 0        | 0          | 0     | 0     | 0       | 0       | 1      | 0       | 0 |
| PITCAIRN                | 0     | 0       | 0     | 0        | 0       | 0    | 0       | 0      | 0   | 0    | 0      | 0        | 0         | 0       | 0       | 0        | 0          | 0     | 0     | 0       | 0       | 0      | 0       | 0 |
| POLAND                  | 0     | 0       | 0     | 0        | 0       | 0    | 0       | 2      | 0   | 0    | 0      | 0        | 2         | 0       | 0       | 0        | 0          | 0     | 0     | 0       | 0       | 0      | 0       | 0 |
| PORTUGAL                | 0     | 0       | 0     | 0        | 0       | 0    | 0       | 0      | 0   | 0    | 0      | 0        | 0         | 0       | 0       | 0        | 0          | 0     | 0     | 0       | 0       | 0      | 0       | 0 |
| PUERTO RICO             | 0     | 0       | 0     | 1        | 0       | 0    | 0       | 1      | 0   | 0    | 0      | 0        | 0         | 0       | 0       | 1        | 0          | 0     | 0     | 0       | 0       | 0      | 0       | 1 |

### May 2023 Totals by Location Moved From, and By County Moved To

| FROM / TO                                  | LEWIS | LINCOLN | MASON | OKANAGON | PACIFIC | PEND<br>OREILLE | PIERCE | SAN<br>JUAN | SKAGIT | SKAMANIA | SNOHOMISH | SPOKANE | STEVENS | THURSTON | WAHAKIAKUM | WALLA<br>WALLA | WHATCOM | WHITMAN | YAKIMA | UNKNOWN |
|--|-------|---------|-------|----------|---------|-----------------|--------|-------------|--------|----------|-----------|---------|---------|----------|------------|----------------|---------|---------|--------|---------|
| QATAR                                      | 0     | 0       | 0     | 0        | 0       | 0               | 0      | 0           | 0      | 0        | 0         | 0       | 0       | 0        | 0          | 0              | 0       | 0       | 0      | 0       |
| REPUBLIC OF KOSOVO                         | 0     | 0       | 0     | 0        | 0       | 0               | 0      | 0           | 0      | 0        | 0         | 0       | 0       | 0        | 0          | 0              | 0       | 0       | 0      | 0       |
| REPUBLIC OF MOLDOVA                        | 0     | 0       | 0     | 0        | 0       | 0               | 0      | 0           | 0      | 0        | 0         | 0       | 0       | 0        | 0          | 0              | 0       | 0       | 0      | 0       |
| RÉUNION ISLAND                             | 0     | 0       | 0     | 0        | 0       | 0               | 0      | 0           | 0      | 0        | 0         | 0       | 0       | 0        | 0          | 0              | 0       | 0       | 0      | 0       |
| ROMANIA                                    | 0     | 0       | 0     | 0        | 0       | 0               | 2      | 0           | 0      | 0        | 4         | 0       | 0       | 0        | 0          | 0              | 0       | 0       | 0      | 1       |
| RUSSIA                                     | 0     | 0       | 0     | 0        | 0       | 0               | 15     | 0           | 0      | 0        | 21        | 8       | 0       | 0        | 0          | 0              | 1       | 0       | 0      | 6       |
| RWANDA                                     | 0     | 0       | 0     | 0        | 0       | 0               | 0      | 0           | 0      | 0        | 0         | 0       | 0       | 0        | 0          | 0              | 0       | 0       | 0      | 0       |
| SAMOA                                      | 0     | 0       | 0     | 0        | 0       | 0               | 0      | 0           | 0      | 0        | 0         | 0       | 0       | 0        | 0          | 0              | 0       | 0       | 0      | 0       |
| SAN MARINO                                 | 0     | 0       | 0     | 0        | 0       | 0               | 0      | 0           | 0      | 0        | 0         | 0       | 0       | 0        | 0          | 0              | 0       | 0       | 0      | 0       |
| SAO TOME AND PRINCIPE                      | 0     | 0       | 0     | 0        | 0       | 0               | 0      | 0           | 0      | 0        | 0         | 0       | 0       | 0        | 0          | 0              | 0       | 0       | 0      | 0       |
| SAUDI ARABIA                               | 0     | 0       | 0     | 0        | 0       | 0               | 0      | 0           | 0      | 0        | 0         | 0       | 0       | 0        | 0          | 0              | 0       | 0       | 0      | 0       |
| SCOTLAND                                   | 0     | 0       | 0     | 0        | 0       | 0               | 0      | 0           | 0      | 0        | 1         | 0       | 0       | 0        | 0          | 0              | 0       | 0       | 0      | 0       |
| SENEGAL                                    | 0     | 0       | 0     | 0        | 0       | 0               | 0      | 0           | 0      | 0        | 0         | 0       | 0       | 0        | 0          | 0              | 0       | 0       | 0      | 0       |
| SERBIA                                     | 0     | 0       | 0     | 0        | 0       | 0               | 0      | 0           | 0      | 0        | 5         | 0       | 0       | 0        | 0          | 0              | 0       | 0       | 0      | 1       |
| SEYCHELLES                                 | 0     | 0       | 0     | 0        | 0       | 0               | 0      | 0           | 0      | 0        | 0         | 0       | 0       | 0        | 0          | 0              | 0       | 0       | 0      | 0       |
| SIERRA LEONE                               | 0     | 0       | 0     | 0        | 0       | 0               | 0      | 0           | 0      | 0        | 0         | 0       | 0       | 0        | 0          | 0              | 0       | 0       | 0      | 0       |
| SINGAPORE                                  | 0     | 0       | 0     | 0        | 0       | 0               | 0      | 0           | 0      | 0        | 0         | 0       | 0       | 0        | 0          | 0              | 0       | 0       | 0      | 0       |
| SINT MAARTEN                               | 0     | 0       | 0     | 0        | 0       | 0               | 0      | 0           | 0      | 0        | 0         | 0       | 0       | 0        | 0          | 0              | 0       | 0       | 0      | 0       |
| SLOVAKIA                                   | 0     | 0       | 0     | 0        | 0       | 0               | 0      | 0           | 0      | 0        | 0         | 0       | 0       | 0        | 0          | 0              | 0       | 0       | 0      | 0       |
| SLOVENIA                                   | 0     | 0       | 0     | 0        | 0       | 0               | 0      | 0           | 0      | 0        | 0         | 0       | 0       | 0        | 0          | 0              | 0       | 0       | 0      | 0       |
| SOLOMON ISLANDS                            | 0     | 0       | 0     | 0        | 0       | 0               | 0      | 0           | 0      | 0        | 0         | 0       | 0       | 0        | 0          | 0              | 0       | 0       | 0      | 0       |
| SOMALIA                                    | 0     | 0       | 0     | 0        | 0       | 0               | 0      | 0           | 0      | 0        | 0         | 0       | 0       | 0        | 0          | 0              | 0       | 0       | 0      | 0       |
| SOUTH AFRICA                               | 0     | 0       | 0     | 0        | 0       | 0               | 0      | 0           | 0      | 0        | 2         | 0       | 0       | 0        | 0          | 0              | 0       | 0       | 0      | 1       |
| SOUTH GEORGIA-SANDWICH                     | 0     | 0       | 0     | 0        | 0       | 0               | 0      | 0           | 0      | 0        | 0         | 0       | 0       | 0        | 0          | 0              | 0       | 0       | 0      | 0       |
| SOUTH KOREA                                | 0     | 0       | 0     | 0        | 0       | 0               | 4      | 0           | 0      | 0        | 10        | 0       | 0       | 2        | 0          | 1              | 1       | 2       | 0      | 0       |
| SOUTH SUDAN                                | 0     | 0       | 0     | 0        | 0       | 0               | 0      | 0           | 0      | 0        | 0         | 0       | 0       | 0        | 0          | 0              | 0       | 0       | 0      | 0       |
| SPAIN                                      | 0     | 0       | 0     | 0        | 0       | 0               | 0      | 0           | 0      | 0        | 1         | 0       | 0       | 0        | 0          | 0              | 0       | 0       | 0      | 0       |
| SRI LANKA                                  | 0     | 0       | 0     | 0        | 0       | 0               | 0      | 0           | 0      | 0        | 0         | 0       | 0       | 0        | 0          | 0              | 0       | 0       | 0      | 0       |
| ST. BARTHÉLEMY                             | 0     | 0       | 0     | 0        | 0       | 0               | 0      | 0           | 0      | 0        | 0         | 0       | 0       | 0        | 0          | 0              | 0       | 0       | 0      | 0       |
| ST. HELENA                                 | 0     | 0       | 0     | 0        | 0       | 0               | 0      | 0           | 0      | 0        | 0         | 0       | 0       | 0        | 0          | 0              | 0       | 0       | 0      | 0       |
| ST. KITTS NEVIS                            | 0     | 0       | 0     | 0        | 0       | 0               | 0      | 0           | 0      | 0        | 0         | 0       | 0       | 0        | 0          | 0              | 0       | 0       | 0      | 0       |
| ST. LUCIA                                  | 0     | 0       | 0     | 0        | 0       | 0               | 0      | 0           | 0      | 0        | 0         | 0       | 0       | 0        | 0          | 0              | 0       | 0       | 0      | 0       |
| ST. PIERRE AND MIQUELON                    | 0     | 0       | 0     | 0        | 0       | 0               | 0      | 0           | 0      | 0        | 0         | 0       | 0       | 0        | 0          | 0              | 0       | 0       | 0      | 0       |
| ST. VINCENT AND THE GREI                   | 0     | 0       | 0     | 0        | 0       | 0               | 0      | 0           | 0      | 0        | 0         | 0       | 0       | 0        | 0          | 0              | 0       | 0       | 0      | 0       |
| SUDAN                                      | 0     | 0       | 0     | 0        | 0       | 0               | 0      | 0           | 0      | 0        | 0         | 0       | 0       | 0        | 0          | 0              | 0       | 0       | 0      | 0       |
| SURINAME                                   | 0     | 0       | 0     | 0        | 0       | 0               | 0      | 0           | 0      | 0        | 0         | 0       | 0       | 0        | 0          | 0              | 0       | 0       | 0      | 0       |
| SVALBARD AND JAN MAYEI                     | 0     | 0       | 0     | 0        | 0       | 0               | 0      | 0           | 0      | 0        | 0         | 0       | 0       | 0        | 0          | 0              | 0       | 0       | 0      | 0       |
| SWAZILAND <small>Renamed as ESWATI</small> | 0     | 0       | 0     | 0        | 0       | 0               | 0      | 0           | 0      | 0        | 0         | 0       | 0       | 0        | 0          | 0              | 0       | 0       | 0      | 0       |
| SWEDEN                                     | 0     | 0       | 0     | 0        | 0       | 0               | 0      | 0           | 0      | 0        | 0         | 0       | 0       | 0        | 0          | 0              | 0       | 0       | 0      | 0       |
| SWITZERLAND                                | 0     | 0       | 0     | 0        | 0       | 0               | 0      | 0           | 0      | 0        | 0         | 1       | 0       | 0        | 0          | 0              | 0       | 0       | 0      | 0       |
| SYRIAN ARAB REPUBLIC                       | 0     | 0       | 0     | 0        | 0       | 0               | 0      | 0           | 0      | 0        | 0         | 0       | 0       | 0        | 0          | 0              | 0       | 0       | 0      | 0       |
| TAIWAN                                     | 0     | 0       | 0     | 0        | 0       | 0               | 0      | 0           | 0      | 0        | 1         | 0       | 0       | 0        | 0          | 0              | 1       | 0       | 0      | 1       |
| TAJIKISTAN                                 | 0     | 0       | 0     | 0        | 0       | 0               | 0      | 0           | 0      | 0        | 0         | 0       | 0       | 0        | 0          | 0              | 0       | 0       | 0      | 0       |
| TANZANIA                                   | 0     | 0       | 0     | 0        | 0       | 0               | 3      | 0           | 0      | 0        | 3         | 0       | 1       | 0        | 0          | 0              | 0       | 0       | 0      | 0       |
| THAILAND                                   | 0     | 0       | 0     | 0        | 0       | 0               | 1      | 0           | 0      | 0        | 1         | 0       | 0       | 0        | 0          | 0              | 0       | 0       | 0      | 0       |
| TIMOR-LESTE                                | 0     | 0       | 0     | 0        | 0       | 0               | 0      | 0           | 0      | 0        | 0         | 0       | 0       | 0        | 0          | 0              | 0       | 0       | 0      | 0       |
| TOGO                                       | 0     | 0       | 0     | 0        | 0       | 0               | 0      | 0           | 0      | 0        | 0         | 0       | 0       | 0        | 0          | 0              | 0       | 0       | 0      | 0       |
| TOKELAU                                    | 0     | 0       | 0     | 0        | 0       | 0               | 0      | 0           | 0      | 0        | 0         | 0       | 0       | 0        | 0          | 0              | 0       | 0       | 0      | 0       |
| TONGA                                      | 0     | 0       | 0     | 0        | 0       | 0               | 0      | 0           | 0      | 0        | 0         | 0       | 0       | 0        | 0          | 0              | 0       | 0       | 0      | 0       |
| TRINIDAD AND TOBAGO                        | 0     | 0       | 0     | 0        | 0       | 0               | 0      | 0           | 0      | 0        | 0         | 0       | 0       | 0        | 0          | 0              | 0       | 0       | 0      | 0       |
| TUNISIA                                    | 0     | 0       | 0     | 0        | 0       | 0               | 0      | 0           | 0      | 0        | 0         | 0       | 0       | 0        | 0          | 0              | 0       | 0       | 0      | 0       |
| TURKEY                                     | 0     | 0       | 0     | 0        | 0       | 0               | 0      | 0           | 0      | 0        | 1         | 1       | 0       | 0        | 0          | 0              | 0       | 0       | 0      | 0       |
| TURKMENISTAN                               | 0     | 0       | 0     | 0        | 0       | 0               | 0      | 0           | 0      | 0        | 0         | 0       | 0       | 0        | 0          | 0              | 0       | 0       | 0      | 0       |
| TURKS AND CAICOS ISLANE                    | 0     | 0       | 0     | 0        | 0       | 0               | 0      | 0           | 0      | 0        | 0         | 0       | 0       | 0        | 0          | 0              | 0       | 0       | 0      | 0       |
| TUVALU                                     | 0     | 0       | 0     | 0        | 0       | 0               | 0      | 0           | 0      | 0        | 0         | 0       | 0       | 0        | 0          | 0              | 0       | 0       | 0      | 0       |
| UGANDA                                     | 0     | 0       | 0     | 0        | 0       | 0               | 1      | 0           | 0      | 0        | 0         | 0       | 0       | 0        | 0          | 0              | 0       | 0       | 0      | 0       |
| UKRAINE                                    | 0     | 0       | 0     | 0        | 0       | 0               | 19     | 0           | 0      | 0        | 28        | 14      | 0       | 0        | 0          | 0              | 7       | 0       | 0      | 8       |
| UNITED ARAB EMIRATES                       | 0     | 0       | 0     | 0        | 0       | 0               | 0      | 0           | 0      | 0        | 1         | 0       | 0       | 0        | 0          | 0              | 0       | 0       | 0      | 1       |

**May 2023 Totals by Location Moved From, and By County Moved To**

| FROM / TO                 | COUNTY    |           |           |           |           |              |             |           |            |           |             |            |           |            |            |           |            | UNKNOWN   |            |            |
|---------------------------|-----------|-----------|-----------|-----------|-----------|--------------|-------------|-----------|------------|-----------|-------------|------------|-----------|------------|------------|-----------|------------|-----------|------------|------------|
|                           | LEWIS     | LINCOLN   | MASON     | OKANAGON  | PACIFIC   | PEND OREILLE | PIERCE      | SAN JUAN  | SKAGIT     | SKAMANIA  | SNOHOMISH   | SPOKANE    | STEVENS   | THURSTON   | WAHAKIAKUM | WALLA     | WHATCOM    |           | WHITMAN    | YAKIMA     |
| UNITED KINGDOM            | 0         | 0         | 0         | 0         | 0         | 0            | 1           | 0         | 0          | 0         | 0           | 0          | 0         | 0          | 0          | 0         | 1          | 0         | 0          | 1          |
| URUGUAY                   | 0         | 0         | 0         | 0         | 0         | 0            | 0           | 0         | 0          | 0         | 0           | 0          | 0         | 0          | 0          | 0         | 0          | 0         | 0          | 0          |
| US MINOR OUTLYING ISLANDS | 0         | 0         | 0         | 0         | 0         | 0            | 0           | 0         | 0          | 0         | 0           | 0          | 0         | 0          | 0          | 0         | 0          | 0         | 0          | 0          |
| UZBEKISTAN                | 0         | 0         | 0         | 0         | 0         | 0            | 0           | 0         | 0          | 0         | 0           | 0          | 0         | 0          | 0          | 0         | 0          | 0         | 0          | 0          |
| VANUATU                   | 0         | 0         | 0         | 0         | 0         | 0            | 0           | 0         | 0          | 0         | 0           | 0          | 0         | 0          | 0          | 0         | 0          | 0         | 0          | 0          |
| VENEZUELA                 | 0         | 0         | 0         | 0         | 0         | 0            | 6           | 0         | 0          | 0         | 9           | 3          | 0         | 1          | 0          | 0         | 0          | 0         | 2          | 1          |
| VIET NAM                  | 0         | 0         | 0         | 0         | 0         | 0            | 1           | 0         | 0          | 0         | 1           | 0          | 0         | 0          | 0          | 0         | 0          | 0         | 0          | 0          |
| VIRGIN ISLANDS            | 0         | 0         | 0         | 0         | 0         | 0            | 0           | 0         | 0          | 0         | 0           | 0          | 0         | 0          | 0          | 0         | 0          | 0         | 0          | 0          |
| VIRGIN ISLANDS, BRITISH   | 0         | 0         | 0         | 0         | 0         | 0            | 0           | 0         | 0          | 0         | 0           | 0          | 0         | 0          | 0          | 0         | 0          | 0         | 0          | 0          |
| VIRGIN ISLANDS, U.S.      | 0         | 0         | 0         | 0         | 0         | 0            | 0           | 0         | 0          | 0         | 0           | 0          | 0         | 0          | 0          | 0         | 0          | 0         | 0          | 0          |
| WALES                     | 0         | 0         | 0         | 0         | 0         | 0            | 0           | 0         | 0          | 0         | 0           | 0          | 0         | 0          | 0          | 0         | 0          | 0         | 0          | 0          |
| WALLIS-FUTUNA             | 0         | 0         | 0         | 0         | 0         | 0            | 0           | 0         | 0          | 0         | 0           | 0          | 0         | 0          | 0          | 0         | 0          | 0         | 0          | 0          |
| WESTERN SAHARA            | 0         | 0         | 0         | 0         | 0         | 0            | 0           | 0         | 0          | 0         | 0           | 0          | 0         | 0          | 0          | 0         | 0          | 0         | 0          | 0          |
| YEMEN                     | 0         | 0         | 0         | 0         | 0         | 0            | 0           | 0         | 0          | 0         | 0           | 0          | 0         | 0          | 0          | 0         | 0          | 0         | 0          | 0          |
| ZAMBIA                    | 0         | 0         | 0         | 0         | 0         | 0            | 0           | 0         | 0          | 0         | 1           | 0          | 0         | 0          | 0          | 0         | 0          | 0         | 0          | 1          |
| ZIMBABWE                  | 0         | 0         | 0         | 0         | 0         | 0            | 1           | 0         | 0          | 0         | 0           | 0          | 0         | 0          | 0          | 0         | 0          | 0         | 0          | 0          |
| <b>** TOTAL **</b>        | <b>90</b> | <b>10</b> | <b>74</b> | <b>38</b> | <b>52</b> | <b>24</b>    | <b>1370</b> | <b>41</b> | <b>143</b> | <b>23</b> | <b>1137</b> | <b>773</b> | <b>62</b> | <b>504</b> | <b>5</b>   | <b>84</b> | <b>375</b> | <b>86</b> | <b>154</b> | <b>285</b> |